



Secretin Receptor Monoclonal Antibody

Catalog No	BYmab-13673
Isotype	IgG
Reactivity	Human;Rat;Mouse;
Applications	WB
Gene Name	SCTR
Protein Name	Secretin receptor
Immunogen	The antiserum was produced against synthesized peptide derived from human SCTR. AA range:100-149
Specificity	Secretin Receptor Monoclonal Antibody detects endogenous levels of Secretin Receptor protein.
Formulation	Liquid in PBS containing 50% glycerol, 0.5% BSA and 0.02% sodium azide.
Source	Monoclonal, Mouse,IgG
Purification	The antibody was affinity-purified from mouse antiserum by affinity-chromatography using epitope-specific immunogen.
Dilution	WB 1:500-2000
Concentration	1 mg/ml
Purity	≥90%
Storage Stability	-20°C/1 year
Synonyms	SCTR; Secretin receptor; SCT-R
Observed Band	48kD
Cell Pathway	Cell membrane ; Multi-pass membrane protein .
Tissue Specificity	Brain,Kidney,Lung,Pancreas,
Function	function:This is a receptor for secretin. The activity of this receptor is mediated by G proteins which activate adenylyl cyclase.,similarity:Belongs to the G-protein coupled receptor 2 family.,
Background	secretin receptor(SCTR) Homo sapiens The protein encoded by this gene is a G protein-coupled receptor and belongs to the glucagon-VIP-secretin receptor family. It binds secretin which is the most potent regulator of pancreatic bicarbonate, electrolyte and volume secretion. Secretin and its receptor are suggested to be involved in pancreatic cancer and autism. [provided by RefSeq, Jul 2008],

Nanjing BYabscience technology Co.,Ltd

网址: www.njbybio.com

官方热线: 025-5229-8998

监督电话: 15950492658



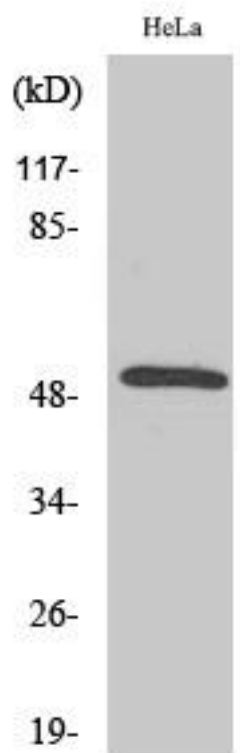
matters needing attention

Avoid repeated freezing and thawing!

Usage suggestions

This product can be used in immunological reaction related experiments. For more information, please consult technical personnel.

Products Images



Western Blot analysis of various cells using Secretin Receptor Monoclonal Antibody