



PTH/PTHrP-R Monoclonal Antibody

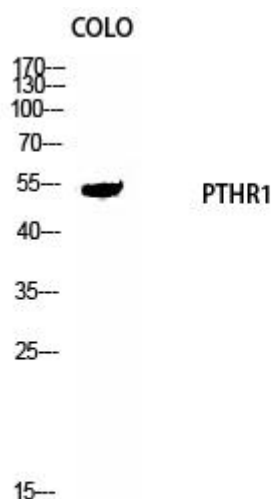
Catalog No	BYmab-13665
Isotype	IgG
Reactivity	Human;Mouse;Rat
Applications	WB
Gene Name	PTH1R
Protein Name	Parathyroid hormone/parathyroid hormone-related peptide receptor
Immunogen	The antiserum was produced against synthesized peptide derived from human PTHR1. AA range:145-194
Specificity	PTH/PTHrP-R Monoclonal Antibody detects endogenous levels of PTH/PTHrP-R protein.
Formulation	Liquid in PBS containing 50% glycerol, 0.5% BSA and 0.02% sodium azide.
Source	Monoclonal, Mouse,IgG
Purification	The antibody was affinity-purified from mouse antiserum by affinity-chromatography using epitope-specific immunogen.
Dilution	WB 1:500-2000
Concentration	1 mg/ml
Purity	≥90%
Storage Stability	-20°C/1 year
Synonyms	PTH1R; PTHR; PTHR1; Parathyroid hormone/parathyroid hormone-related peptide receptor; PTH/PTHrP type I receptor; PTH/PTHr receptor; Parathyroid hormone 1 receptor; PTH1 receptor
Observed Band	52kD
Cell Pathway	Cell membrane ; Multi-pass membrane protein .
Tissue Specificity	Expressed in most tissues. Most abundant in kidney, bone and liver.
Function	disease:Defects in PTH1R are a cause of primary failure of tooth eruption (PFE) [MIM:125350]. PFE is a rare condition that has high penetrance and variable expressivity and in which tooth retention occurs without evidence of any obvious mechanical interference. Instead, malfunction of the eruptive mechanism itself appears to cause nonankylosed permanent teeth to fail to erupt, although the eruption pathway has been cleared by bone resorption.,disease:Defects in PTH1R are the cause of chondrodysplasia Blomstrand type (BOCD) [MIM:215045]. BOCD is a severe skeletal dysplasia.,disease:Defects in PTH1R are the cause of Eiken syndrome [MIM:600002]; also called Eiken skeletal

Nanjing BYabscience technology Co.,Ltd



	dysplasia or bone modeling defect of hands and feet. Eiken syndrome is a rare familial autosomal recessive skeletal dysplasia. It is characterized by multiple epiphyseal dysplasia, with extremely retarded ossification, pri
Background	The protein encoded by this gene is a member of the G-protein coupled receptor family 2. This protein is a receptor for parathyroid hormone (PTH) and for parathyroid hormone-like hormone (PTHrP). The activity of this receptor is mediated by G proteins which activate adenylyl cyclase and also a phosphatidylinositol-calcium second messenger system. Defects in this receptor are known to be the cause of Jansen's metaphyseal chondrodysplasia (JMC), chondrodysplasia Blomstrand type (BOCD), as well as enchondromatosis. Two transcript variants encoding the same protein have been found for this gene. [provided by RefSeq, May 2010],
matters needing attention	Avoid repeated freezing and thawing!
Usage suggestions	This product can be used in immunological reaction related experiments. For more information, please consult technical personnel.

Products Images



Western Blot analysis of various cells using
PTH/PTHrP-R Monoclonal Antibody