



# Olfactory receptor 7C2 Monoclonal Antibody

|                    |                                                                                                                                                                                                                                                                                                                                                                                                                                                                                                                                        |
|--------------------|----------------------------------------------------------------------------------------------------------------------------------------------------------------------------------------------------------------------------------------------------------------------------------------------------------------------------------------------------------------------------------------------------------------------------------------------------------------------------------------------------------------------------------------|
| Catalog No         | BYmab-13625                                                                                                                                                                                                                                                                                                                                                                                                                                                                                                                            |
| Isotype            | IgG                                                                                                                                                                                                                                                                                                                                                                                                                                                                                                                                    |
| Reactivity         | Human;Rat;Mouse;                                                                                                                                                                                                                                                                                                                                                                                                                                                                                                                       |
| Applications       | WB                                                                                                                                                                                                                                                                                                                                                                                                                                                                                                                                     |
| Gene Name          | OR7C2                                                                                                                                                                                                                                                                                                                                                                                                                                                                                                                                  |
| Protein Name       | Olfactory receptor 7C2                                                                                                                                                                                                                                                                                                                                                                                                                                                                                                                 |
| Immunogen          | The antiserum was produced against synthesized peptide derived from human OR7C2. AA range:198-247                                                                                                                                                                                                                                                                                                                                                                                                                                      |
| Specificity        | Olfactory receptor 7C2 Monoclonal Antibody detects endogenous levels of Olfactory receptor 7C2 protein.                                                                                                                                                                                                                                                                                                                                                                                                                                |
| Formulation        | Liquid in PBS containing 50% glycerol, 0.5% BSA and 0.02% sodium azide.                                                                                                                                                                                                                                                                                                                                                                                                                                                                |
| Source             | Monoclonal, Mouse,IgG                                                                                                                                                                                                                                                                                                                                                                                                                                                                                                                  |
| Purification       | The antibody was affinity-purified from mouse antiserum by affinity-chromatography using epitope-specific immunogen.                                                                                                                                                                                                                                                                                                                                                                                                                   |
| Dilution           | WB 1:500-2000                                                                                                                                                                                                                                                                                                                                                                                                                                                                                                                          |
| Concentration      | 1 mg/ml                                                                                                                                                                                                                                                                                                                                                                                                                                                                                                                                |
| Purity             | ≥90%                                                                                                                                                                                                                                                                                                                                                                                                                                                                                                                                   |
| Storage Stability  | -20°C/1 year                                                                                                                                                                                                                                                                                                                                                                                                                                                                                                                           |
| Synonyms           | OR7C2; OR7C3; Olfactory receptor 7C2; Olfactory receptor 19-18; OR19-18; Olfactory receptor 7C3; Olfactory receptor OR19-22                                                                                                                                                                                                                                                                                                                                                                                                            |
| Observed Band      | 35kD                                                                                                                                                                                                                                                                                                                                                                                                                                                                                                                                   |
| Cell Pathway       | Cell membrane; Multi-pass membrane protein.                                                                                                                                                                                                                                                                                                                                                                                                                                                                                            |
| Tissue Specificity |                                                                                                                                                                                                                                                                                                                                                                                                                                                                                                                                        |
| Function           | function:Odorant receptor .,similarity:Belongs to the G-protein coupled receptor 1 family.,                                                                                                                                                                                                                                                                                                                                                                                                                                            |
| Background         | olfactory receptor family 7 subfamily C member 2(OR7C2) Homo sapiens Olfactory receptors interact with odorant molecules in the nose, to initiate a neuronal response that triggers the perception of a smell. The olfactory receptor proteins are members of a large family of G-protein-coupled receptors (GPCR) arising from single coding-exon genes. Olfactory receptors share a 7-transmembrane domain structure with many neurotransmitter and hormone receptors and are responsible for the recognition and G protein-mediated |

Nanjing BYabscience technology Co.,Ltd



transduction of odorant signals. The olfactory receptor gene family is the largest in the genome. The nomenclature assigned to the olfactory receptor genes and proteins for this organism is independent of other organisms. [provided by RefSeq, Jul 2008],

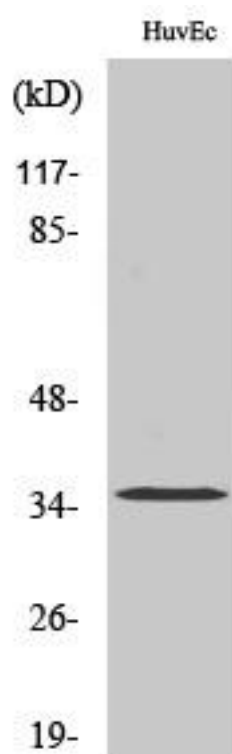
**matters needing attention**

Avoid repeated freezing and thawing!

**Usage suggestions**

This product can be used in immunological reaction related experiments. For more information, please consult technical personnel.

## Products Images



Western Blot analysis of various cells using Olfactory receptor 7C2 Monoclonal Antibody