



# LTK Monoclonal Antibody

<b>Catalog No</b>	BYmab-13400
<b>Isotype</b>	IgG
<b>Reactivity</b>	Human;Mouse
<b>Applications</b>	WB
<b>Gene Name</b>	LTK
<b>Protein Name</b>	Leukocyte tyrosine kinase receptor
<b>Immunogen</b>	The antiserum was produced against synthesized peptide derived from human LTK. AA range:206-255
<b>Specificity</b>	LTK Monoclonal Antibody detects endogenous levels of LTK protein.
<b>Formulation</b>	Liquid in PBS containing 50% glycerol, 0.5% BSA and 0.02% sodium azide.
<b>Source</b>	Monoclonal, Mouse,IgG
<b>Purification</b>	The antibody was affinity-purified from mouse antiserum by affinity-chromatography using epitope-specific immunogen.
<b>Dilution</b>	WB 1:500-2000
<b>Concentration</b>	1 mg/ml
<b>Purity</b>	≥90%
<b>Storage Stability</b>	-20°C/1 year
<b>Synonyms</b>	LTK; TYK1; Leukocyte tyrosine kinase receptor; Protein tyrosine kinase 1
<b>Observed Band</b>	92kD
<b>Cell Pathway</b>	Cell membrane ; Single-pass type I membrane protein .
<b>Tissue Specificity</b>	Expressed in non-hematopoietic cell lines and T- and B-cell lines.
<b>Function</b>	alternative products:Additional isoforms seem to exist,catalytic activity:ATP + a [protein]-L-tyrosine = ADP + a [protein]-L-tyrosine phosphate.,function:The exact function of this protein is not known. It is probably a receptor with a tyrosine-protein kinase activity.,similarity:Belongs to the protein kinase superfamily. Tyr protein kinase family. Insulin receptor subfamily.,similarity:Contains 1 protein kinase domain.,tissue specificity:Expressed in non-hematopoietic cell lines and T- and B-cell lines.,
<b>Background</b>	leukocyte receptor tyrosine kinase(LTK) Homo sapiens The protein encoded by this gene is a member of the ros/insulin receptor family of tyrosine kinases. Tyrosine-specific phosphorylation of proteins is a key to the control of diverse

**Nanjing BYabscience technology Co.,Ltd**



pathways leading to cell growth and differentiation. Multiple transcript variants encoding different isoforms have been found for this gene. [provided by RefSeq, Oct 2008],

**matters needing attention**

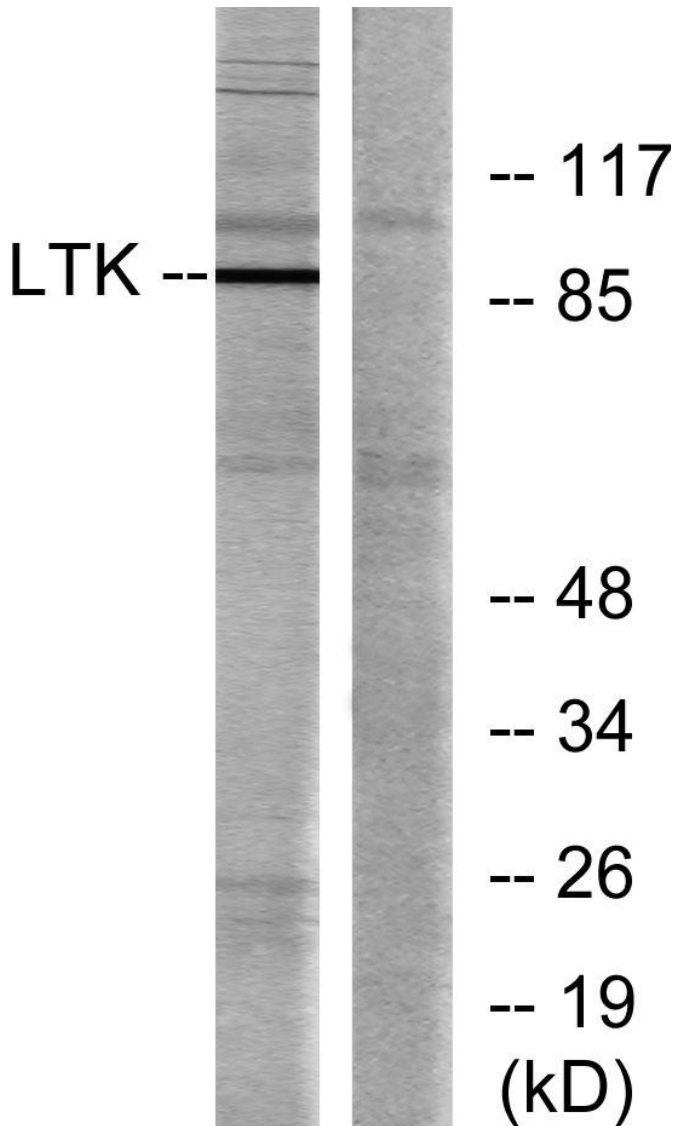
Avoid repeated freezing and thawing!

**Usage suggestions**

This product can be used in immunological reaction related experiments. For more information, please consult technical personnel.

## Products Images

Western Blot analysis of various cells using LTK Monoclonal Antibody



Nanjing BYabscience technology Co.,Ltd

网址: [www.njbybio.com](http://www.njbybio.com)

官方热线: 025-5229-8998

监督电话: 15950492658