



# LTB4DH Monoclonal Antibody

Catalog No	BYmab-13399
Isotype	IgG
Reactivity	Human;Rat;Mouse;
Applications	WB
Gene Name	PTGR1
Protein Name	Prostaglandin reductase 1
Immunogen	The antiserum was produced against synthesized peptide derived from human PTGR1. AA range:75-124
Specificity	LTB4DH Monoclonal Antibody detects endogenous levels of LTB4DH protein.
Formulation	Liquid in PBS containing 50% glycerol, 0.5% BSA and 0.02% sodium azide.
Source	Monoclonal, Mouse,IgG
Purification	The antibody was affinity-purified from mouse antiserum by affinity-chromatography using epitope-specific immunogen.
Dilution	WB 1:500-2000
Concentration	1 mg/ml
Purity	≥90%
Storage Stability	-20°C/1 year
Synonyms	PTGR1; LTB4DH; Prostaglandin reductase 1; PRG-1; 15-oxoprostaglandin 13-reductase; NADP-dependent leukotriene B4 12-hydroxydehydrogenase
Observed Band	36kD
Cell Pathway	Cytoplasm .
Tissue Specificity	High expression in the kidney, liver, and intestine but not in leukocytes.
Function	catalytic activity:11-alpha-hydroxy-9,15-dioxoprost-5-enoate + NAD(P)(+) = (5Z)-(13E)-11-alpha-hydroxy-9,15-dioxoprost-5,13-dienoate + NAD(P)H.;catalytic activity:n-alkanal + NAD(P)(+) = alk-2-enal + NAD(P)H.;function:Functions as 15-oxo-prostaglandin 13-reductase and acts on 15-oxo-PGE1, 15-oxo-PGE2 and 15-oxo-PGE2-alpha. Has no activity towards PGE1, PGE2 and PGE2-alpha (By similarity). Catalyzes the conversion of leukotriene B4 into its biologically less active metabolite, 12-oxo-leukotriene B4. This is an initial and key step of metabolic inactivation of leukotriene B4.;similarity:Belongs to the NADP-dependent oxidoreductase L4BD family.;subunit:Monomer or homodimer.;tissue specificity:High expression in the

Nanjing BYabscience technology Co.,Ltd



kidney, liver, and intestine but not in leukocytes.,

#### Background

This gene encodes an enzyme that is involved in the inactivation of the chemotactic factor, leukotriene B4. The encoded protein specifically catalyzes the NADP+ dependent conversion of leukotriene B4 to 12-oxo-leukotriene B4. A pseudogene of this gene is found on chromosome 1. Alternative splicing results in multiple transcript variants. [provided by RefSeq, Mar 2009],

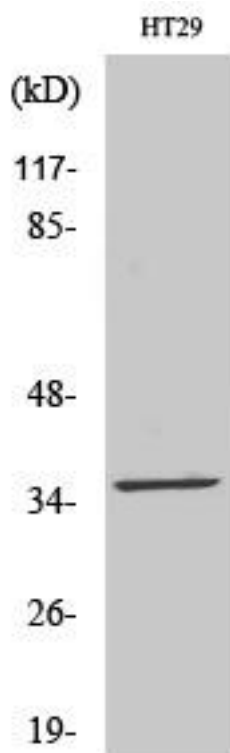
#### matters needing attention

Avoid repeated freezing and thawing!

#### Usage suggestions

This product can be used in immunological reaction related experiments. For more information, please consult technical personnel.

## Products Images



Western Blot analysis of various cells using LTB4DH Monoclonal Antibody