



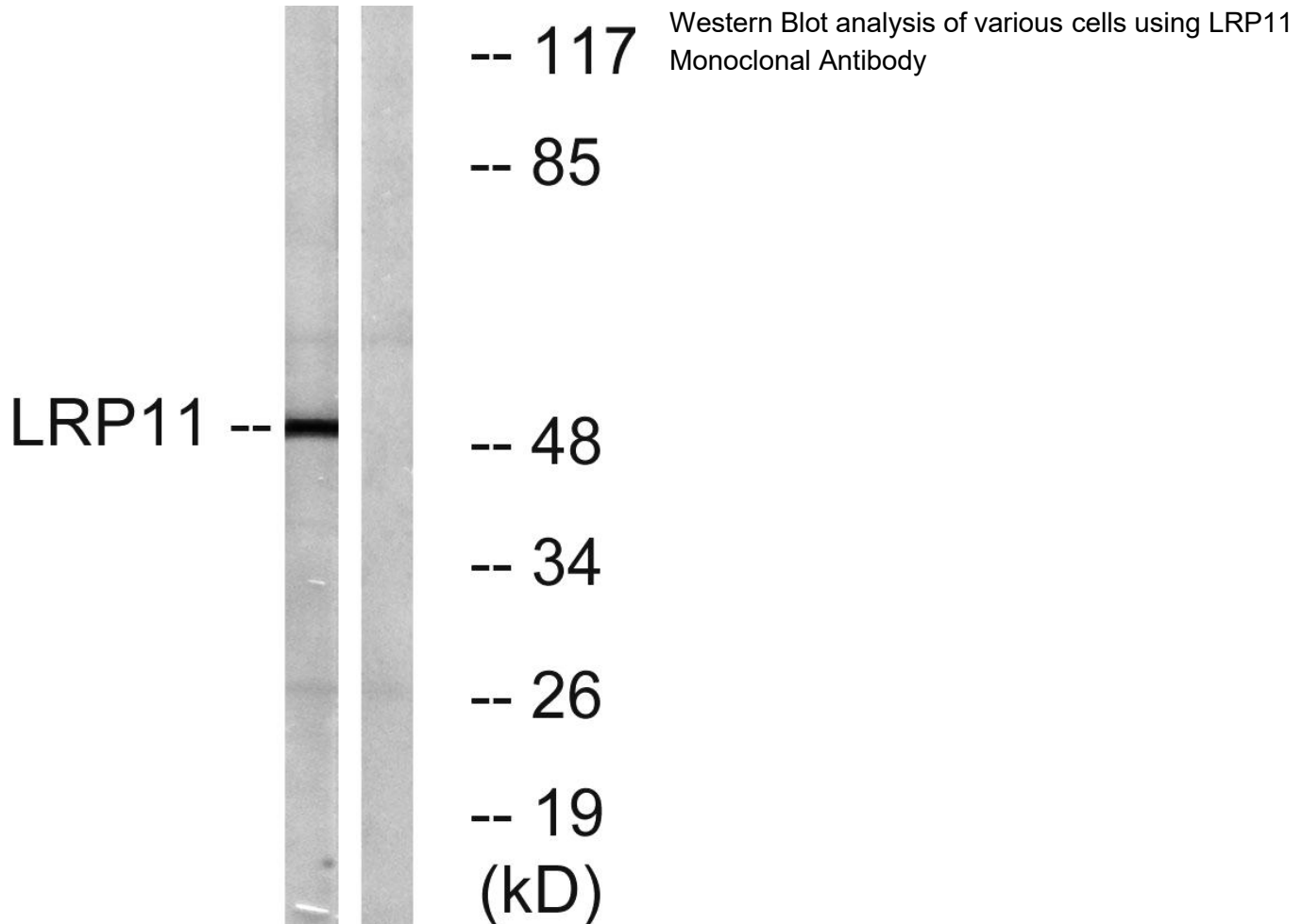
LRP11 Monoclonal Antibody

Catalog No	BYmab-13397
Isotype	IgG
Reactivity	Human;Rat;Mouse;
Applications	WB
Gene Name	LRP11
Protein Name	Low-density lipoprotein receptor-related protein 11
Immunogen	The antiserum was produced against synthesized peptide derived from human LRP11. AA range:48-97
Specificity	LRP11 Monoclonal Antibody detects endogenous levels of LRP11 protein.
Formulation	Liquid in PBS containing 50% glycerol, 0.5% BSA and 0.02% sodium azide.
Source	Monoclonal, Mouse,IgG
Purification	The antibody was affinity-purified from mouse antiserum by affinity-chromatography using epitope-specific immunogen.
Dilution	WB 1:500-2000
Concentration	1 mg/ml
Purity	≥90%
Storage Stability	-20°C/1 year
Synonyms	LRP11; Low-density lipoprotein receptor-related protein 11; LRP-11
Observed Band	50kD
Cell Pathway	Membrane ; Single-pass type I membrane protein .
Tissue Specificity	Brain,Skin,
Function	similarity:Belongs to the LDLR family.,similarity:Contains 1 LDL-receptor class A domain.,similarity:Contains 1 MANSC domain.,similarity:Contains 1 PKD domain.,
Background	similarity:Belongs to the LDLR family.,similarity:Contains 1 LDL-receptor class A domain.,similarity:Contains 1 MANSC domain.,similarity:Contains 1 PKD domain.,
matters needing attention	Avoid repeated freezing and thawing!
Usage suggestions	This product can be used in immunological reaction related experiments. For more information, please consult technical personnel.

Nanjing BYabscience technology Co.,Ltd



Products Images



Nanjing BYabs science technology Co.,Ltd

网址: www.njbybio.com

官方热线: 025-5229-8998

监督电话: 15950492658