



# LGR6 Monoclonal Antibody

Catalog No	BYmab-13393
Isotype	IgG
Reactivity	Human;Rat;Mouse;
Applications	WB
Gene Name	LGR6
Protein Name	Leucine-rich repeat-containing G-protein coupled receptor 6
Immunogen	The antiserum was produced against synthesized peptide derived from human LGR6. AA range:471-520
Specificity	LGR6 Monoclonal Antibody detects endogenous levels of LGR6 protein.
Formulation	Liquid in PBS containing 50% glycerol, 0.5% BSA and 0.02% sodium azide.
Source	Monoclonal, Mouse,IgG
Purification	The antibody was affinity-purified from mouse antiserum by affinity-chromatography using epitope-specific immunogen.
Dilution	WB 1:500-2000
Concentration	1 mg/ml
Purity	≥90%
Storage Stability	-20°C/1 year
Synonyms	LGR6; Leucine-rich repeat-containing G-protein coupled receptor 6
Observed Band	104kD
Cell Pathway	Cell membrane ; Multi-pass membrane protein .
Tissue Specificity	Mammary gland,
Function	function:Orphan receptor.,PTM:Phosphorylated upon DNA damage, probably by ATM or ATR.,similarity:Belongs to the G-protein coupled receptor 1 family.,similarity:Contains 16 LRR (leucine-rich) repeats.,
Background	This gene encodes a member of the leucine-rich repeat-containing subgroup of the G protein-coupled 7-transmembrane protein superfamily. The encoded protein is a glycoprotein hormone receptor with a large N-terminal extracellular domain that contains leucine-rich repeats important for the formation of a horseshoe-shaped interaction motif for ligand binding. Alternative splicing of this gene results in multiple transcript variants. [provided by RefSeq, Jul 2008],

Nanjing BYabscience technology Co.,Ltd



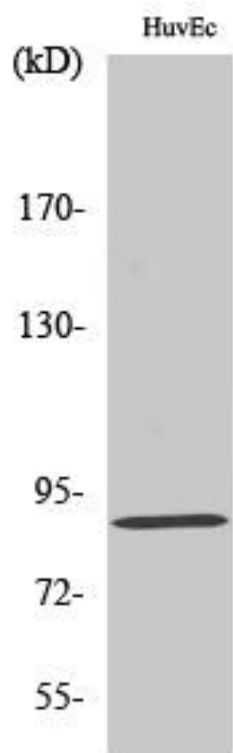
**matters needing attention**

Avoid repeated freezing and thawing!

**Usage suggestions**

This product can be used in immunological reaction related experiments. For more information, please consult technical personnel.

## Products Images



Western Blot analysis of various cells using LGR6 Monoclonal Antibody