



# IL-11R $\alpha$ Monoclonal Antibody

<b>Catalog No</b>	BYmab-13369
<b>Isotype</b>	IgG
<b>Reactivity</b>	Human;Rat;Mouse;
<b>Applications</b>	WB
<b>Gene Name</b>	IL11RA
<b>Protein Name</b>	Interleukin-11 receptor subunit alpha
<b>Immunogen</b>	Synthesized peptide derived from IL-11R $\alpha$ . at AA range: 300-380
<b>Specificity</b>	IL-11R $\alpha$ Monoclonal Antibody detects endogenous levels of IL-11R $\alpha$ protein.
<b>Formulation</b>	Liquid in PBS containing 50% glycerol, 0.5% BSA and 0.02% sodium azide.
<b>Source</b>	Monoclonal, Mouse,IgG
<b>Purification</b>	The antibody was affinity-purified from mouse antiserum by affinity-chromatography using epitope-specific immunogen.
<b>Dilution</b>	WB 1:500-2000
<b>Concentration</b>	1 mg/ml
<b>Purity</b>	$\geq 90\%$
<b>Storage Stability</b>	-20°C/1 year
<b>Synonyms</b>	IL11RA; Interleukin-11 receptor subunit alpha; IL-11 receptor subunit alpha; IL-11R subunit alpha; IL-11R-alpha; IL-11RA
<b>Observed Band</b>	45kD
<b>Cell Pathway</b>	[Interleukin-11 receptor subunit alpha]: Membrane ; Single-pass type I membrane protein .; [Soluble interleukin-11 receptor subunit alpha]: Secreted .; [Isoform HCR2]: Secreted .
<b>Tissue Specificity</b>	Expressed in a number of cell lines, including the myelogenous leukemia cell line K-562, the megakaryocytic leukemia cell line M-07e, the erythroleukemia cell line TF-1, and the osteosarcoma cell lines, MG-63 and SaOS-2 (PubMed:7670098). Also expressed in normal and malignant prostate epithelial cell lines. Expression levels are increased in prostate carcinoma.
<b>Function</b>	disease:Increased levels of IL11R are found in prostate carcinoma.,function:Receptor for interleukin-11. The receptor systems for IL6, LIF, OSM, CNTF, IL11 and CT1 can utilize IL6ST for initiating signal transmission. The IL11/IL11RA/IL6ST complex may be involved in the control of proliferation and/or differentiation of skeletogenic progenitor or other mesenchymal cells.,similarity:Belongs to the type I cytokine receptor family. Type 3 subfamily.,similarity:Contains 1 Ig-like C2-type (immunoglobulin-like)

**Nanjing BYabscience technology Co.,Ltd**



domain.,similarity:Contains 2 fibronectin type-III domains.,subunit:On ligand binding, forms a multimer complex with IL6ST/gp130.,tissue specificity:Expressed in a number of cell lines, including the myelogenous leukemia cell line K562, the megakaryocytic leukemia cell line Mo7E, the erythroleukemia cell line TF1, and the osteosarcoma cell lines, MG-63 and Saos-2. Also expressed in norm

## Background

Interleukin 11 is a stromal cell-derived cytokine that belongs to a family of pleiotropic and redundant cytokines that use the gp130 transducing subunit in their high affinity receptors. This gene encodes the IL-11 receptor, which is a member of the hematopoietic cytokine receptor family. This particular receptor is very similar to ciliary neurotrophic factor, since both contain an extracellular region with a 2-domain structure composed of an immunoglobulin-like domain and a cytokine receptor-like domain. Multiple alternatively spliced transcript variants have been found for this gene. [provided by RefSeq, Jun 2012],

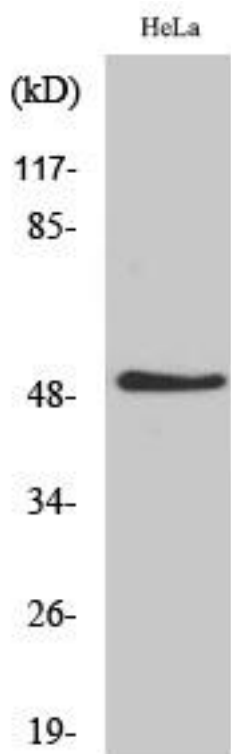
## matters needing attention

Avoid repeated freezing and thawing!

## Usage suggestions

This product can be used in immunological reaction related experiments. For more information, please consult technical personnel.

## Products Images



Western Blot analysis of various cells using IL-11R  $\alpha$  Monoclonal Antibody