



CNIH2 mouse mAb

Catalog No	BYmab-11792
Isotype	IgG
Reactivity	Human; Mouse;Rat
Applications	WB
Gene Name	CNIH2 CNIL
Protein Name	CNIH2
Immunogen	Synthesized peptide derived from human CNIH2 AA range: 10-60
Specificity	This antibody detects endogenous levels of CNIH2 at Human/Mouse/Rat
Formulation	Liquid in PBS containing 50% glycerol, 0.5% BSA and 0.02% sodium azide.
Source	Monoclonal, Mouse,IgG
Purification	The antibody was affinity-purified from mouse antiserum by affinity-chromatography using epitope-specific immunogen.
Dilution	WB 1:500-2000
Concentration	1 mg/ml
Purity	≥90%
Storage Stability	-20°C/1 year
Synonyms	
Observed Band	
Cell Pathway	Endoplasmic reticulum membrane ; Multi-pass membrane protein . Cell junction, synapse, postsynaptic cell membrane ; Multi-pass membrane protein . Cell projection, dendrite . Cell projection, dendritic spine . Cell junction, synapse, postsynaptic density . Also localizes to the cell membrane of extrasynaptic sites (dendritic shafts, spines of pyramidal cells). .
Tissue Specificity	Expression is up-regulated in dorsolateral prefrontal cortex of patients with schizophrenia (postmortem brain study).
Function	function:Involved in the transport and maturation of proteins.,similarity:Belongs to the cornichon family.,
Background	The protein encoded by this gene is an auxiliary subunit of the ionotropic glutamate receptor of the AMPA subtype. AMPA receptors mediate fast synaptic neurotransmission in the central nervous system. This protein has been reported to interact with the Type I AMPA receptor regulatory protein isoform gamma-8 to control assembly of hippocampal AMPA receptor complexes, thereby modulating receptor gating and pharmacology. Alternative splicing results in multiple

Nanjing BYabscience technology Co.,Ltd



transcript variants. [provided by RefSeq, Aug 2012],

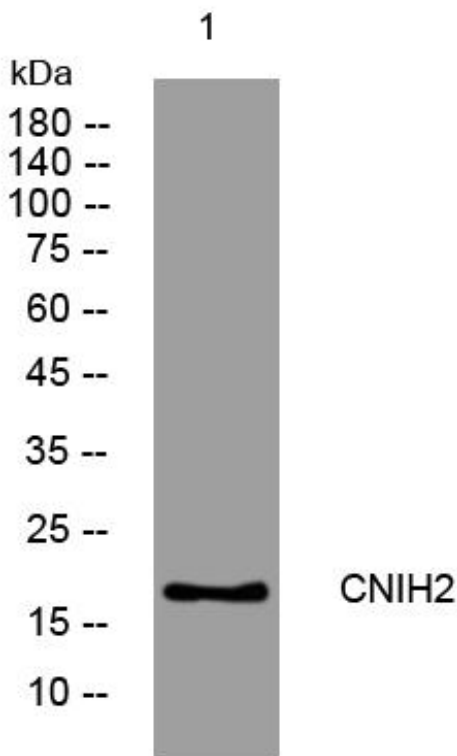
matters needing attention

Avoid repeated freezing and thawing!

Usage suggestions

This product can be used in immunological reaction related experiments. For more information, please consult technical personnel.

Products Images



Western Blot analysis of various cells using CNIH2 mouse mAb