



# GPR68 Monoclonal Antibody

Catalog No	BYmab-13347
Isotype	IgG
Reactivity	Human;Mouse
Applications	WB
Gene Name	GPR68
Protein Name	Ovarian cancer G-protein coupled receptor 1
Immunogen	The antiserum was produced against synthesized peptide derived from human SPR1. AA range:281-330
Specificity	GPR68 Monoclonal Antibody detects endogenous levels of GPR68 protein.
Formulation	Liquid in PBS containing 50% glycerol, 0.5% BSA and 0.02% sodium azide.
Source	Monoclonal, Mouse,IgG
Purification	The antibody was affinity-purified from mouse antiserum by affinity-chromatography using epitope-specific immunogen.
Dilution	WB 1:500-2000
Concentration	1 mg/ml
Purity	≥90%
Storage Stability	-20°C/1 year
Synonyms	GPR68; OGR1; Ovarian cancer G-protein coupled receptor 1; OGR-1; G-protein coupled receptor 68; GPR12A; Sphingosylphosphorylcholine receptor
Observed Band	41kD
Cell Pathway	Cell membrane; Multi-pass membrane protein.
Tissue Specificity	Found at low level in a wide range of tissues, but significantly expressed in lung, kidney, bone and nervous system.
Function	similarity:Belongs to the G-protein coupled receptor 1 family.,
Background	similarity:Belongs to the G-protein coupled receptor 1 family.,
matters needing attention	Avoid repeated freezing and thawing!

Nanjing BYabscience technology Co.,Ltd

网址: [www.njbybio.com](http://www.njbybio.com)

官方热线: 025-5229-8998

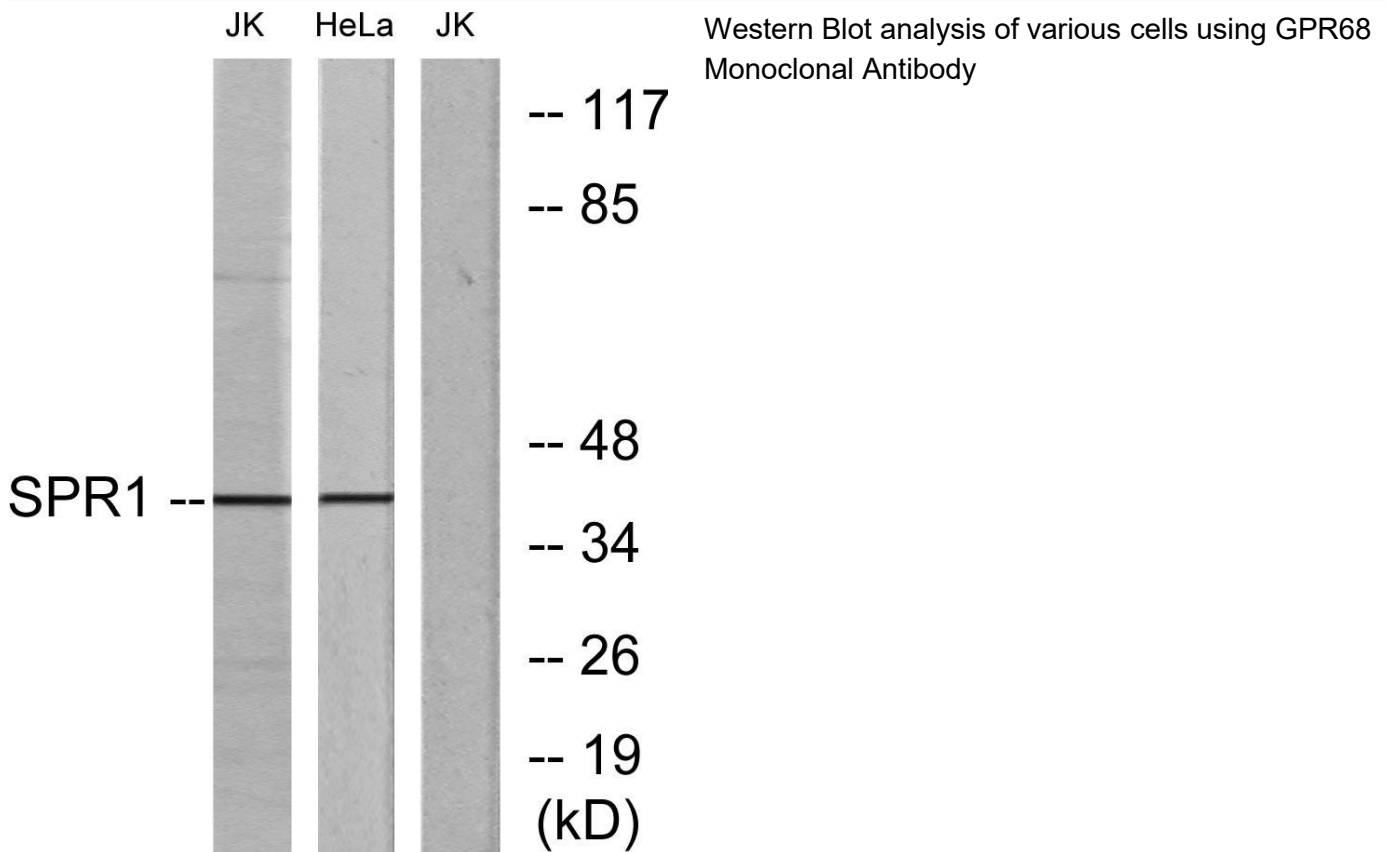
监督电话: 15950492658



### Usage suggestions

This product can be used in immunological reaction related experiments. For more information, please consult technical personnel.

### Products Images



Nanjing BYabs science technology Co.,Ltd

网址: [www.njbybio.com](http://www.njbybio.com)

官方热线: 025-5229-8998

监督电话: 15950492658