



GPR52 Monoclonal Antibody

Catalog No	BYmab-13343
Isotype	IgG
Reactivity	Human;Rat;Mouse;
Applications	WB
Gene Name	GPR52
Protein Name	Probable G-protein coupled receptor 52
Immunogen	The antiserum was produced against synthesized peptide derived from human GPR52. AA range:311-360
Specificity	GPR52 Monoclonal Antibody detects endogenous levels of GPR52 protein.
Formulation	Liquid in PBS containing 50% glycerol, 0.5% BSA and 0.02% sodium azide.
Source	Monoclonal, Mouse,IgG
Purification	The antibody was affinity-purified from mouse antiserum by affinity-chromatography using epitope-specific immunogen.
Dilution	WB 1:500-2000
Concentration	1 mg/ml
Purity	≥90%
Storage Stability	-20°C/1 year
Synonyms	GPR52; Probable G-protein coupled receptor 52
Observed Band	41kD
Cell Pathway	Cell membrane; Multi-pass membrane protein.
Tissue Specificity	Expressed in brain, especially in striatum.
Function	function:Orphan receptor.,similarity:Belongs to the G-protein coupled receptor 1 family.,
Background	Members of the G protein-coupled receptor (GPR) family play important roles in signal transduction from the external environment to the inside of the cell.[supplied by OMIM, Jul 2002],
matters needing attention	Avoid repeated freezing and thawing!

Nanjing BYabscience technology Co.,Ltd

网址: www.njbybio.com

官方热线: 025-5229-8998

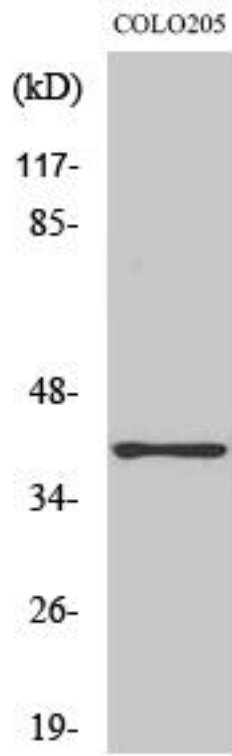
监督电话: 15950492658



Usage suggestions

This product can be used in immunological reaction related experiments. For more information, please consult technical personnel.

Products Images



Western Blot analysis of various cells using GPR52 Monoclonal Antibody

Nanjing BYabs science technology Co.,Ltd

网址: www.njbybio.com

官方热线: 025-5229-8998

监督电话: 15950492658