



GPR35 Monoclonal Antibody

Catalog No	BYmab-13333
Isotype	IgG
Reactivity	Human;Rat;Mouse;
Applications	WB
Gene Name	GPR35
Protein Name	G-protein coupled receptor 35
Immunogen	The antiserum was produced against synthesized peptide derived from human GPR35. AA range:51-100
Specificity	GPR35 Monoclonal Antibody detects endogenous levels of GPR35 protein.
Formulation	Liquid in PBS containing 50% glycerol, 0.5% BSA and 0.02% sodium azide.
Source	Monoclonal, Mouse,IgG
Purification	The antibody was affinity-purified from mouse antiserum by affinity-chromatography using epitope-specific immunogen.
Dilution	WB 1:500-2000
Concentration	1 mg/ml
Purity	≥90%
Storage Stability	-20°C/1 year
Synonyms	GPR35; G-protein coupled receptor 35; Kynurenic acid receptor; KYNA receptor
Observed Band	34kD
Cell Pathway	Cell membrane ; Multi-pass membrane protein . Internalized to the cytoplasm after exposure to kynurenic acid.
Tissue Specificity	Predominantly expressed in immune and gastrointestinal tissues.
Function	function:Orphan receptor.,similarity:Belongs to the G-protein coupled receptor 1 family.,tissue specificity:Expressed in all adult and fetal tissues examined, including pancreatic islets and skeletal muscle, with relatively higher levels in adult lung, small intestine, colon and stomach.,
Background	function:Orphan receptor.,similarity:Belongs to the G-protein coupled receptor 1 family.,tissue specificity:Expressed in all adult and fetal tissues examined, including pancreatic islets and skeletal muscle, with relatively higher levels in adult lung, small intestine, colon and stomach.,

Nanjing BYabscience technology Co.,Ltd



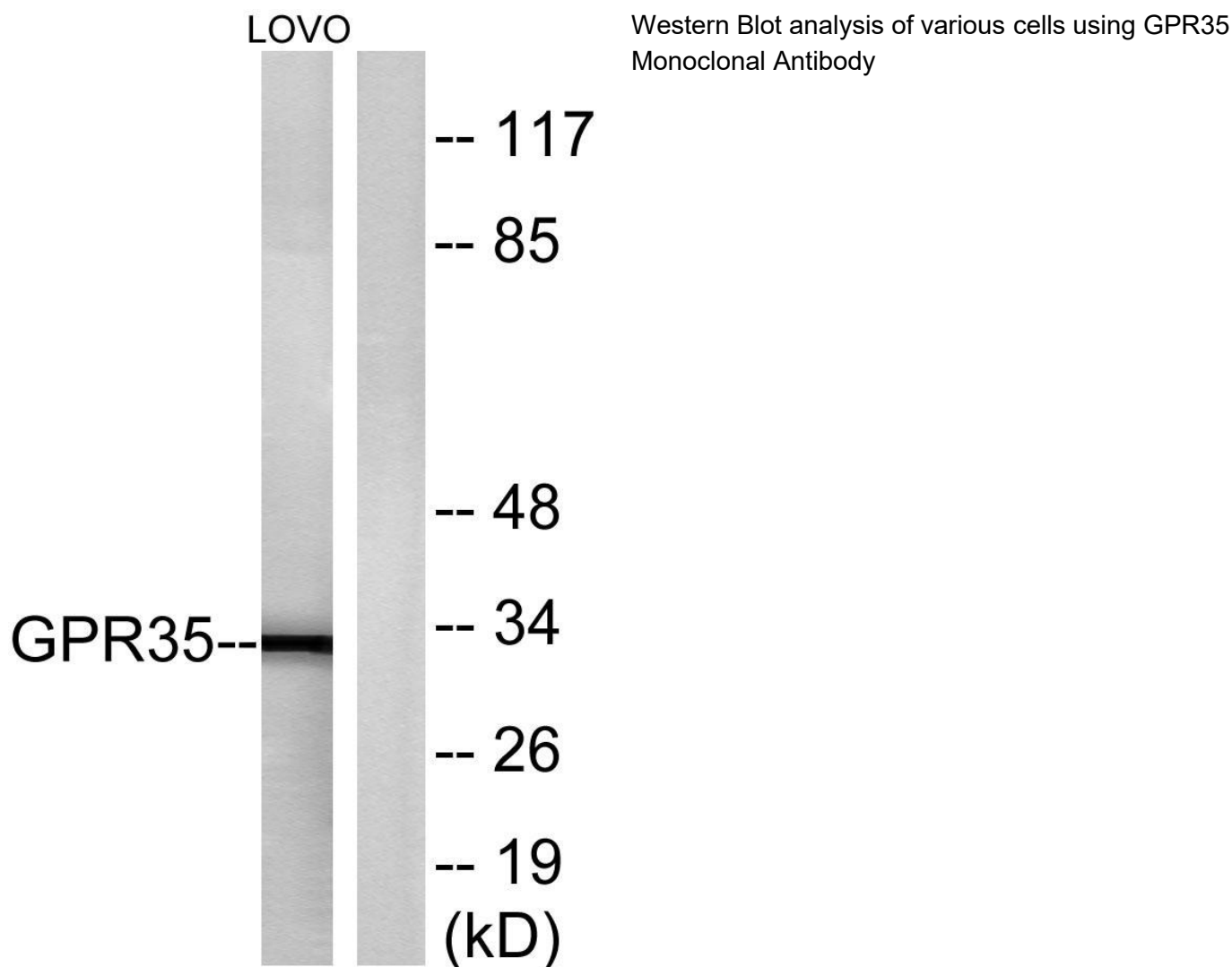
matters needing attention

Avoid repeated freezing and thawing!

Usage suggestions

This product can be used in immunological reaction related experiments. For more information, please consult technical personnel.

Products Images



Nanjing BYabscience technology Co.,Ltd

网址: www.njbybio.com

官方热线: 025-5229-8998

监督电话: 15950492658