



GPR20 Monoclonal Antibody

Catalog No	BYmab-13326
Isotype	IgG
Reactivity	Human;Rat;Mouse;
Applications	WB
Gene Name	GPR20
Protein Name	G-protein coupled receptor 20
Immunogen	The antiserum was produced against synthesized peptide derived from human GPR20. AA range:291-340
Specificity	GPR20 Monoclonal Antibody detects endogenous levels of GPR20 protein.
Formulation	Liquid in PBS containing 50% glycerol, 0.5% BSA and 0.02% sodium azide.
Source	Monoclonal, Mouse,IgG
Purification	The antibody was affinity-purified from mouse antiserum by affinity-chromatography using epitope-specific immunogen.
Dilution	WB 1:500-2000
Concentration	1 mg/ml
Purity	≥90%
Storage Stability	-20°C/1 year
Synonyms	GPR20; G-protein coupled receptor 20
Observed Band	42kD
Cell Pathway	Cell membrane ; Multi-pass membrane protein .
Tissue Specificity	Ubiquitous with highest levels in intestinal tissues. In the brain detected in thalamus, putamen, and caudate, but not in frontal cortex, pons and hypothalamus.
Function	function:Orphan receptor.,similarity:Belongs to the G-protein coupled receptor 1 family.,tissue specificity:Liver and the brain regions thalamus, putamen, and caudate, but not in frontal cortex, pons and hypothalamus.,
Background	function:Orphan receptor.,similarity:Belongs to the G-protein coupled receptor 1 family.,tissue specificity:Liver and the brain regions thalamus, putamen, and caudate, but not in frontal cortex, pons and hypothalamus.,
matters needing attention	Avoid repeated freezing and thawing!

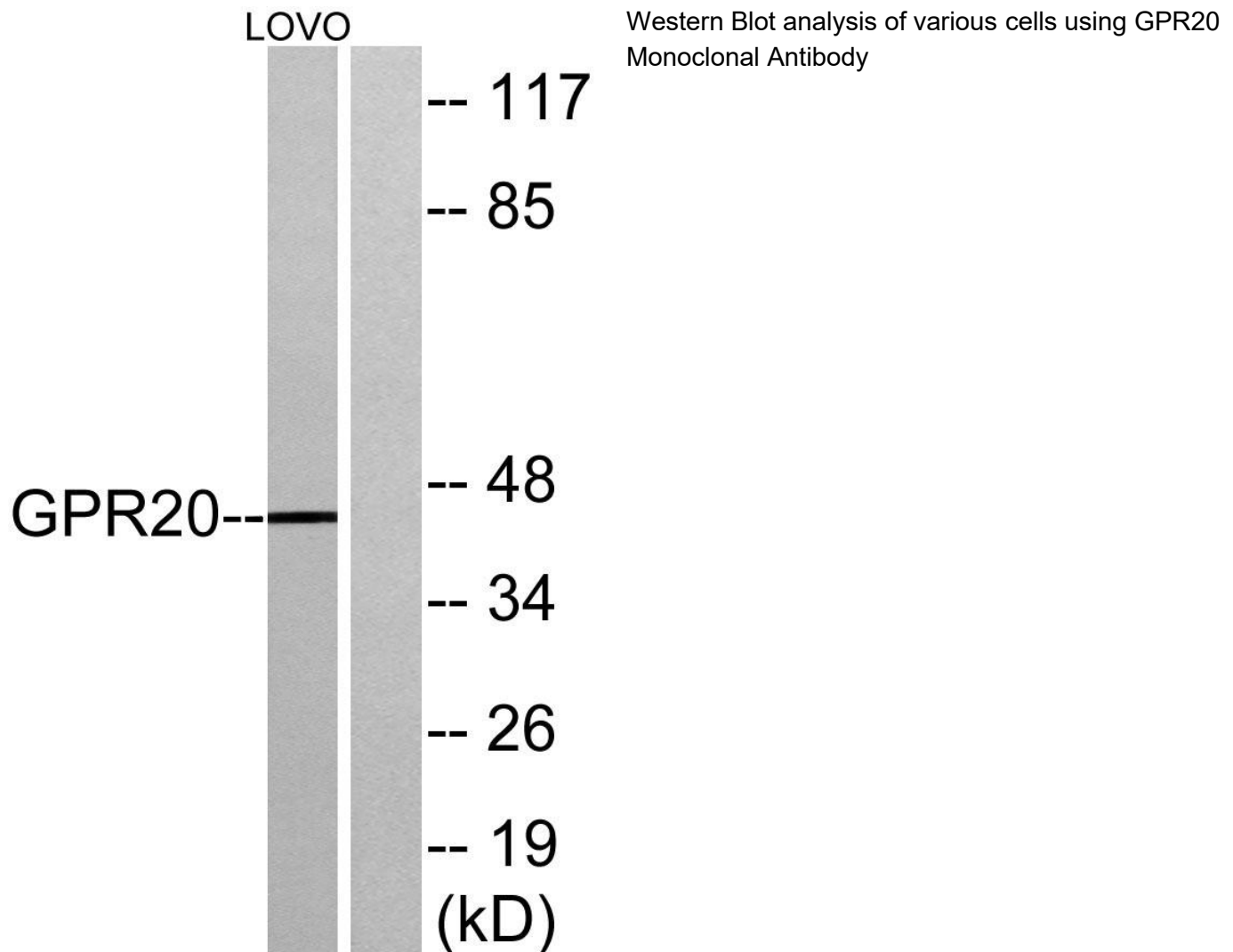
Nanjing BYabscience technology Co.,Ltd



Usage suggestions

This product can be used in immunological reaction related experiments. For more information, please consult technical personnel.

Products Images



Nanjing BYabscience technology Co.,Ltd

网址: www.njbybio.com

官方热线: 025-5229-8998

监督电话: 15950492658