



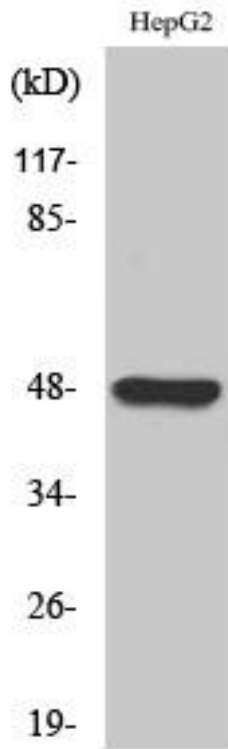
GPR19 Monoclonal Antibody

| | |
|---------------------------|--|
| Catalog No | BYmab-13325 |
| Isotype | IgG |
| Reactivity | Human;Mouse;Rat |
| Applications | WB |
| Gene Name | GPR19 |
| Protein Name | Probable G-protein coupled receptor 19 |
| Immunogen | The antiserum was produced against synthesized peptide derived from human GPR19. AA range:361-410 |
| Specificity | GPR19 Monoclonal Antibody detects endogenous levels of GPR19 protein. |
| Formulation | Liquid in PBS containing 50% glycerol, 0.5% BSA and 0.02% sodium azide. |
| Source | Monoclonal, Mouse,IgG |
| Purification | The antibody was affinity-purified from mouse antiserum by affinity-chromatography using epitope-specific immunogen. |
| Dilution | WB 1:500-2000 |
| Concentration | 1 mg/ml |
| Purity | ≥90% |
| Storage Stability | -20°C/1 year |
| Synonyms | GPR19; Probable G-protein coupled receptor 19; GPR-NGA |
| Observed Band | 47kD |
| Cell Pathway | Cell membrane; Multi-pass membrane protein. |
| Tissue Specificity | Abundant expression in the brain. |
| Function | function:Orphan receptor.,similarity:Belongs to the G-protein coupled receptor 1 family.,tissue specificity:Abundant expression in the brain., |
| Background | function:Orphan receptor.,similarity:Belongs to the G-protein coupled receptor 1 family.,tissue specificity:Abundant expression in the brain., |
| matters needing attention | Avoid repeated freezing and thawing! |
| Usage suggestions | This product can be used in immunological reaction related experiments. For more information, please consult technical personnel. |

Nanjing BYabscience technology Co.,Ltd



Products Images



Western Blot analysis of various cells using GPR19 Monoclonal Antibody