



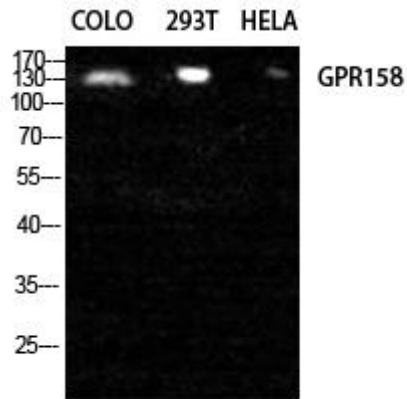
GPR158 Monoclonal Antibody

Catalog No	BYmab-13313
Isotype	IgG
Reactivity	Human;Mouse
Applications	WB
Gene Name	GPR158
Protein Name	Probable G-protein coupled receptor 158
Immunogen	The antiserum was produced against synthesized peptide derived from human GPR158. AA range:1-50
Specificity	GPR158 Monoclonal Antibody detects endogenous levels of GPR158 protein.
Formulation	Liquid in PBS containing 50% glycerol, 0.5% BSA and 0.02% sodium azide.
Source	Monoclonal, Mouse,IgG
Purification	The antibody was affinity-purified from mouse antiserum by affinity-chromatography using epitope-specific immunogen.
Dilution	WB 1:500-2000
Concentration	1 mg/ml
Purity	≥90%
Storage Stability	-20°C/1 year
Synonyms	GPR158; KIAA1136; Probable G-protein coupled receptor 158
Observed Band	150kD
Cell Pathway	Cell membrane; Multi-pass membrane protein.
Tissue Specificity	Brain,
Function	function:Orphan receptor.,similarity:Belongs to the G-protein coupled receptor 3 family.,
Background	function:Orphan receptor.,similarity:Belongs to the G-protein coupled receptor 3 family.,
matters needing attention	Avoid repeated freezing and thawing!
Usage suggestions	This product can be used in immunological reaction related experiments. For more information, please consult technical personnel.

Nanjing BYabscience technology Co.,Ltd



Products Images



Western Blot analysis of various cells using GPR158 Monoclonal Antibody