



# GPR157 Monoclonal Antibody

Catalog No	BYmab-13312
Isotype	IgG
Reactivity	Human;Rat;Mouse;
Applications	WB
Gene Name	GPR157
Protein Name	Probable G-protein coupled receptor 157
Immunogen	The antiserum was produced against synthesized peptide derived from human GPR157. AA range:81-130
Specificity	GPR157 Monoclonal Antibody detects endogenous levels of GPR157 protein.
Formulation	Liquid in PBS containing 50% glycerol, 0.5% BSA and 0.02% sodium azide.
Source	Monoclonal, Mouse,IgG
Purification	The antibody was affinity-purified from mouse antiserum by affinity-chromatography using epitope-specific immunogen.
Dilution	WB 1:500-2000
Concentration	1 mg/ml
Purity	≥90%
Storage Stability	-20°C/1 year
Synonyms	GPR157; Probable G-protein coupled receptor 157
Observed Band	37kD
Cell Pathway	Cell projection, cilium membrane ; Multi-pass membrane protein . Expressed in the primary cilia of radial glial progenitors (RGPs) exposed to the cerebrospinal fluid. .
Tissue Specificity	Mammary gland,Placenta,Prostate,
Function	function:Orphan receptor.,similarity:Belongs to the G-protein coupled receptor 2 family.,
Background	function:Orphan receptor.,similarity:Belongs to the G-protein coupled receptor 2 family.,
matters needing attention	Avoid repeated freezing and thawing!

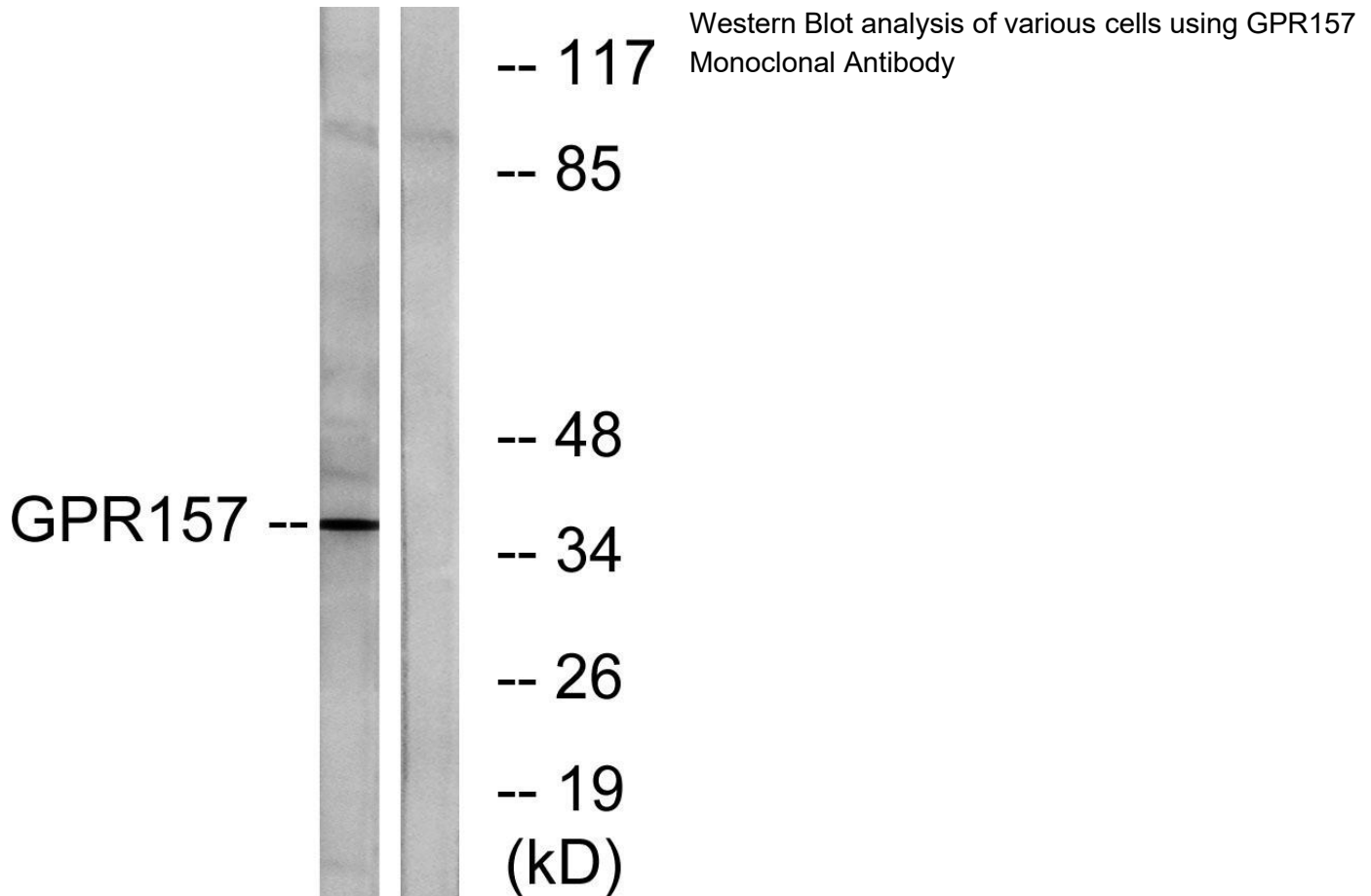
Nanjing BYabscience technology Co.,Ltd



### Usage suggestions

This product can be used in immunological reaction related experiments. For more information, please consult technical personnel.

### Products Images



Nanjing BYabs science technology Co.,Ltd

网址: [www.njbybio.com](http://www.njbybio.com)

官方热线: 025-5229-8998

监督电话: 15950492658