



GPR151 Monoclonal Antibody

Catalog No	BYmab-13309
Isotype	IgG
Reactivity	Human;Mouse;Rat
Applications	WB
Gene Name	GPR151
Protein Name	Probable G-protein coupled receptor 151
Immunogen	The antiserum was produced against synthesized peptide derived from human GPR151. AA range:370-419
Specificity	GPR151 Monoclonal Antibody detects endogenous levels of GPR151 protein.
Formulation	Liquid in PBS containing 50% glycerol, 0.5% BSA and 0.02% sodium azide.
Source	Monoclonal, Mouse,IgG
Purification	The antibody was affinity-purified from mouse antiserum by affinity-chromatography using epitope-specific immunogen.
Dilution	WB 1:500-2000
Concentration	1 mg/ml
Purity	≥90%
Storage Stability	-20°C/1 year
Synonyms	GPR151; PGR7; Probable G-protein coupled receptor 151; G-protein coupled receptor PGR7; GPCR-2037
Observed Band	46kD
Cell Pathway	Cell membrane ; Multi-pass membrane protein .
Tissue Specificity	High expression in the spinal cord.
Function	function:Orphan receptor.,similarity:Belongs to the G-protein coupled receptor 1 family.,
Background	function:Orphan receptor.,similarity:Belongs to the G-protein coupled receptor 1 family.,
matters needing attention	Avoid repeated freezing and thawing!

Nanjing BYabscience technology Co.,Ltd

网址: www.njbybio.com

官方热线: 025-5229-8998

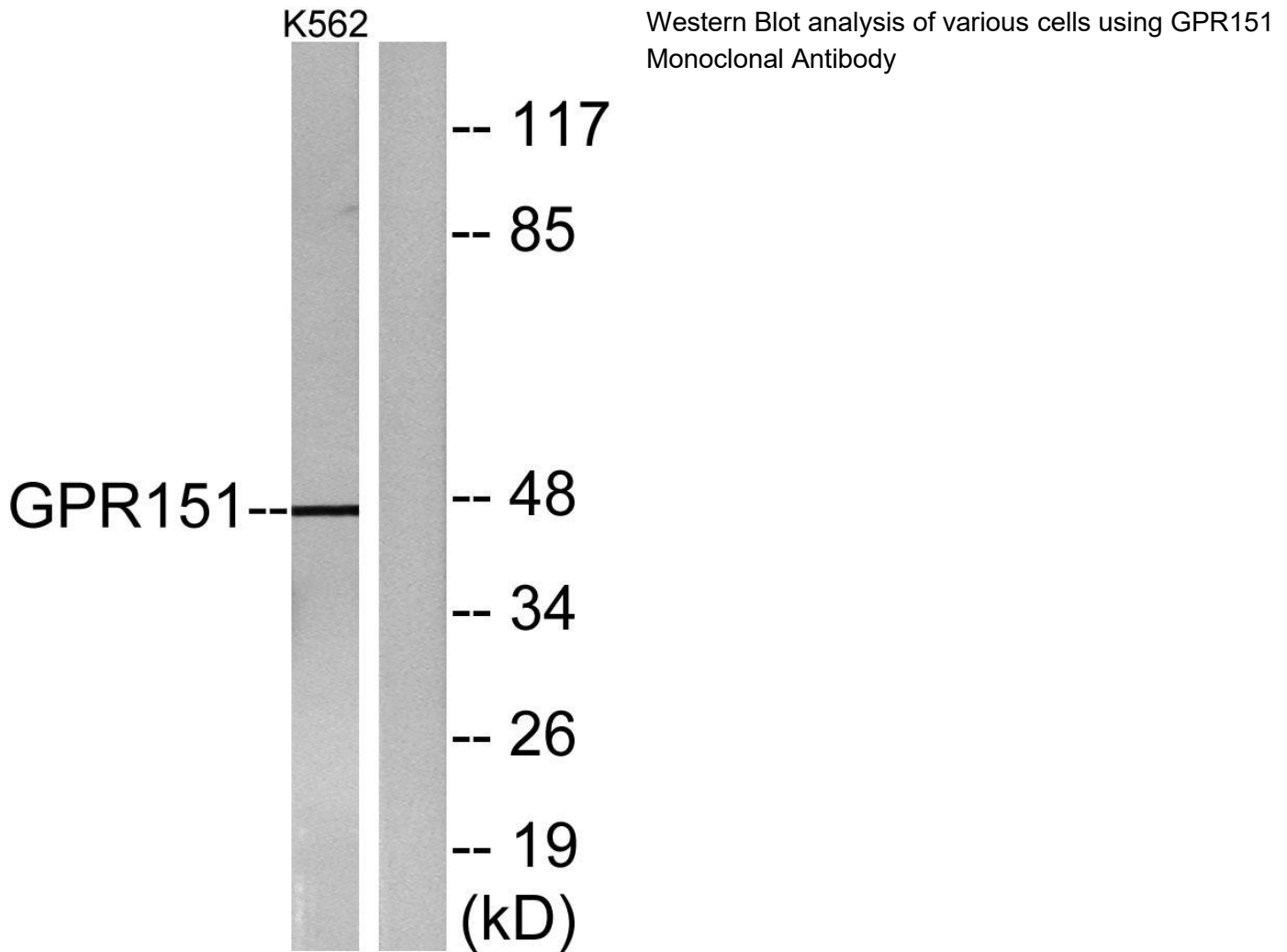
监督电话: 15950492658



Usage suggestions

This product can be used in immunological reaction related experiments. For more information, please consult technical personnel.

Products Images



Nanjing BYabs science technology Co.,Ltd

网址: www.njbybio.com

官方热线: 025-5229-8998

监督电话: 15950492658