



GPR153 Monoclonal Antibody

Catalog No	BYmab-13308
Isotype	IgG
Reactivity	Human;Mouse;Rat
Applications	WB
Gene Name	GPR153
Protein Name	Probable G-protein coupled receptor 153
Immunogen	The antiserum was produced against synthesized peptide derived from human GPR153. AA range:195-244
Specificity	GPR153 Monoclonal Antibody detects endogenous levels of GPR153 protein.
Formulation	Liquid in PBS containing 50% glycerol, 0.5% BSA and 0.02% sodium azide.
Source	Monoclonal, Mouse,IgG
Purification	The antibody was affinity-purified from mouse antiserum by affinity-chromatography using epitope-specific immunogen.
Dilution	WB 1:500-2000
Concentration	1 mg/ml
Purity	≥90%
Storage Stability	-20°C/1 year
Synonyms	GPR153; PGR1; Probable G-protein coupled receptor 153; G-protein coupled receptor PGR1
Observed Band	65kD
Cell Pathway	Cell membrane; Multi-pass membrane protein.
Tissue Specificity	Brain,Melanoma,
Function	function:Orphan receptor.,similarity:Belongs to the G-protein coupled receptor 1 family.,
Background	function:Orphan receptor.,similarity:Belongs to the G-protein coupled receptor 1 family.,
matters needing attention	Avoid repeated freezing and thawing!

Nanjing BYabscience technology Co.,Ltd

网址: www.njbybio.com

官方热线: 025-5229-8998

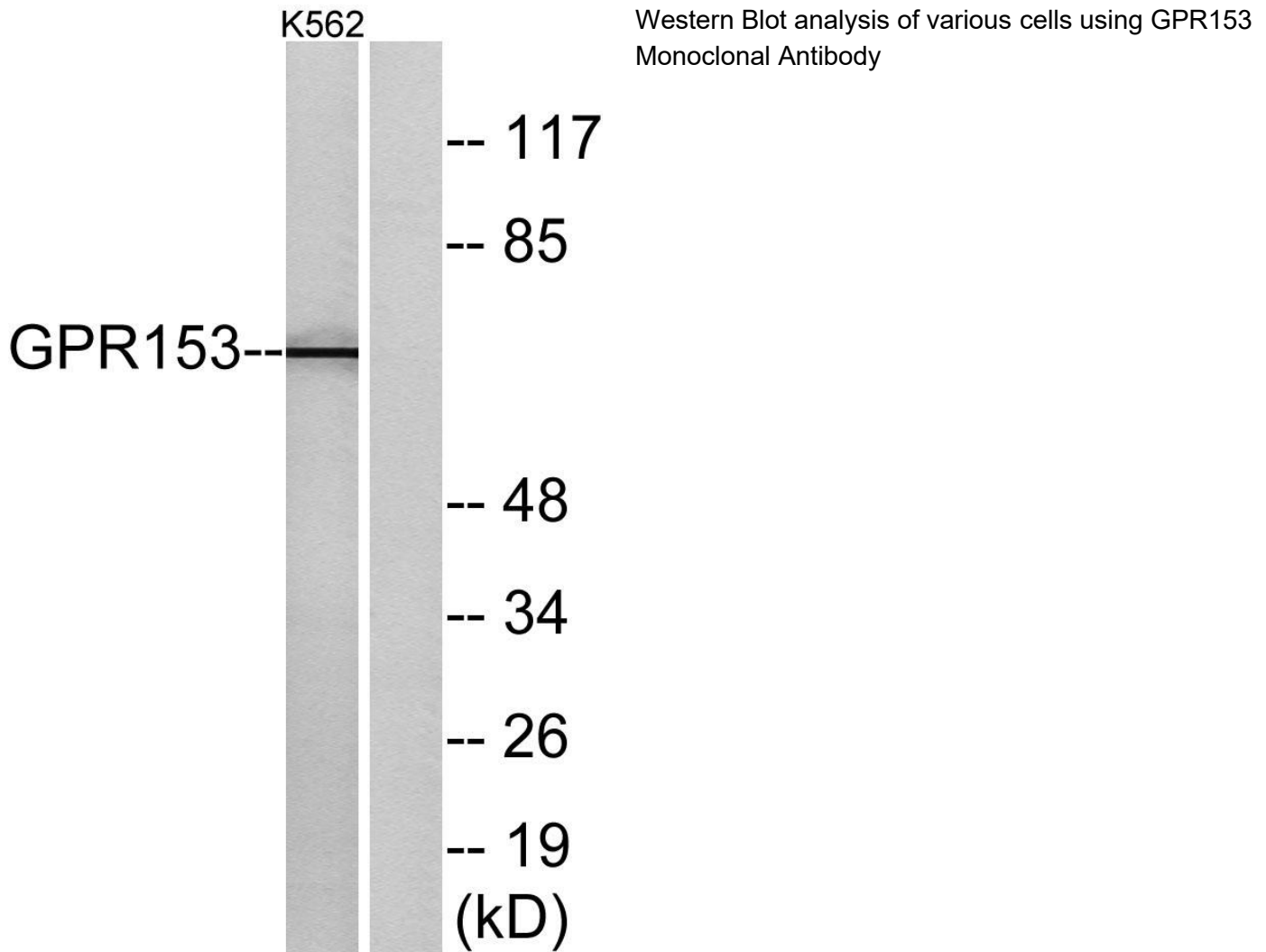
监督电话: 15950492658



Usage suggestions

This product can be used in immunological reaction related experiments. For more information, please consult technical personnel.

Products Images



Nanjing BYabscience technology Co.,Ltd

网址: www.njbybio.com

官方热线: 025-5229-8998

监督电话: 15950492658