



GPR149 Monoclonal Antibody

Catalog No	BYmab-13305
Isotype	IgG
Reactivity	Human;Rat;Mouse;
Applications	WB
Gene Name	GPR149
Protein Name	Probable G-protein coupled receptor 149
Immunogen	The antiserum was produced against synthesized peptide derived from human GPR149. AA range:451-500
Specificity	GPR149 Monoclonal Antibody detects endogenous levels of GPR149 protein.
Formulation	Liquid in PBS containing 50% glycerol, 0.5% BSA and 0.02% sodium azide.
Source	Monoclonal, Mouse,IgG
Purification	The antibody was affinity-purified from mouse antiserum by affinity-chromatography using epitope-specific immunogen.
Dilution	WB 1:500-2000
Concentration	1 mg/ml
Purity	≥90%
Storage Stability	-20°C/1 year
Synonyms	GPR149; PGR10; Probable G-protein coupled receptor 149; G-protein coupled receptor PGR10
Observed Band	81kD
Cell Pathway	Cell membrane; Multi-pass membrane protein.
Tissue Specificity	Brain,
Function	function:Orphan receptor.,similarity:Belongs to the G-protein coupled receptor 1 family.,
Background	function:Orphan receptor.,similarity:Belongs to the G-protein coupled receptor 1 family.,
matters needing attention	Avoid repeated freezing and thawing!

Nanjing BYabscience technology Co.,Ltd

网址: www.njbybio.com

官方热线: 025-5229-8998

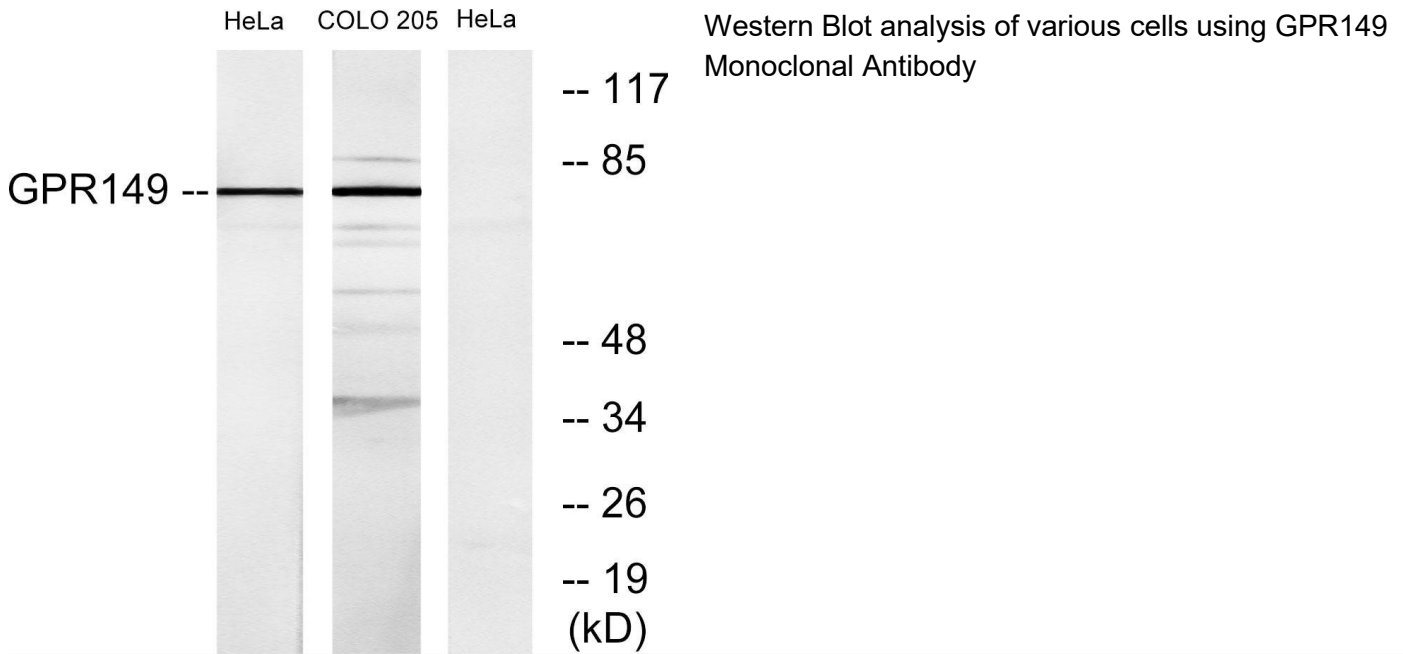
监督电话: 15950492658



Usage suggestions

This product can be used in immunological reaction related experiments. For more information, please consult technical personnel.

Products Images



Nanjing BYabs science technology Co.,Ltd

网址: www.njbybio.com

官方热线: 025-5229-8998

监督电话: 15950492658