



GPR137C Monoclonal Antibody

Catalog No	BYmab-13299
Isotype	IgG
Reactivity	Human;Rat;Mouse;
Applications	WB
Gene Name	GPR137C
Protein Name	Integral membrane protein GPR137C
Immunogen	The antiserum was produced against synthesized peptide derived from human GPR137C. AA range:256-305
Specificity	GPR137C Monoclonal Antibody detects endogenous levels of GPR137C protein.
Formulation	Liquid in PBS containing 50% glycerol, 0.5% BSA and 0.02% sodium azide.
Source	Monoclonal, Mouse,IgG
Purification	The antibody was affinity-purified from mouse antiserum by affinity-chromatography using epitope-specific immunogen.
Dilution	WB 1:500-2000
Concentration	1 mg/ml
Purity	≥90%
Storage Stability	-20°C/1 year
Synonyms	GPR137C; TM7SF1L2; Integral membrane protein GPR137C; Transmembrane 7 superfamily member 1-like 2 protein
Observed Band	45kD
Cell Pathway	Lysosome membrane ; Multi-pass membrane protein .
Tissue Specificity	Melanoma,Small intestine,
Function	similarity:Belongs to the GPR137 family.,
Background	similarity:Belongs to the GPR137 family.,
matters needing attention	Avoid repeated freezing and thawing!

Nanjing BYabscience technology Co.,Ltd

网址: www.njbybio.com

官方热线: 025-5229-8998

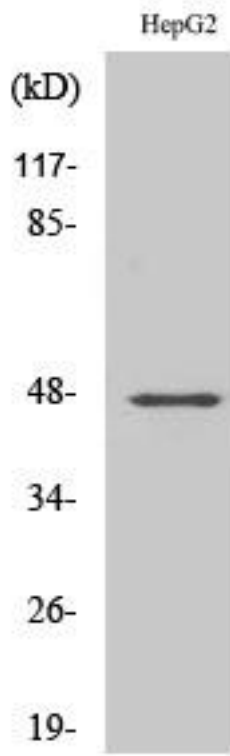
监督电话: 15950492658



Usage suggestions

This product can be used in immunological reaction related experiments. For more information, please consult technical personnel.

Products Images



Western Blot analysis of various cells using GPR137C Monoclonal Antibody

Nanjing BYabs science technology Co.,Ltd

网址: www.njbybio.com

官方热线: 025-5229-8998

监督电话: 15950492658