



# GPR116 Monoclonal Antibody

Catalog No	BYmab-13289
Isotype	IgG
Reactivity	Human;Rat;Mouse;
Applications	WB
Gene Name	GPR116
Protein Name	Probable G-protein coupled receptor 116
Immunogen	The antiserum was produced against synthesized peptide derived from human GPR116. AA range:11-60
Specificity	GPR116 Monoclonal Antibody detects endogenous levels of GPR116 protein.
Formulation	Liquid in PBS containing 50% glycerol, 0.5% BSA and 0.02% sodium azide.
Source	Monoclonal, Mouse,IgG
Purification	The antibody was affinity-purified from mouse antiserum by affinity-chromatography using epitope-specific immunogen.
Dilution	WB 1:500-2000
Concentration	1 mg/ml
Purity	≥90%
Storage Stability	-20°C/1 year
Synonyms	GPR116; KIAA0758; Probable G-protein coupled receptor 116
Observed Band	150kD
Cell Pathway	Cell membrane ; Multi-pass membrane protein .
Tissue Specificity	Brain,Plasma,Testis,
Function	function:May have a role in the regulation of acid-base balance.,PTM:Proteolytically cleaved into 2 highly conserved sites: one in the SEA domain and the other in the stalk domain region preceding the first transmembrane. The later 2 subunits, the extracellular subunit and the seven-transmembrane subunit, remain tightly associated and non-covalently linked.,sequence caution:Contaminating sequence. Potential poly-A sequence.,similarity:Belongs to the G-protein coupled receptor 2 family. LN-TM7 subfamily.,similarity:Contains 1 GPS domain.,similarity:Contains 1 SEA domain.,similarity:Contains 3 Ig-like (immunoglobulin-like) domains.,subunit:Exists as disulfide-linked dimers at the cell surface.,

Nanjing BYabscience technology Co.,Ltd



## Background

function: May have a role in the regulation of acid-base balance., PTM: Proteolytically cleaved into 2 highly conserved sites: one in the SEA domain and the other in the stalk domain region preceding the first transmembrane. The later 2 subunits, the extracellular subunit and the seven-transmembrane subunit, remain tightly associated and non-covalently linked., sequence caution: Contaminating sequence. Potential poly-A sequence., similarity: Belongs to the G-protein coupled receptor 2 family. LN-TM7 subfamily., similarity: Contains 1 GPS domain., similarity: Contains 1 SEA domain., similarity: Contains 3 Ig-like (immunoglobulin-like) domains., subunit: Exists as disulfide-linked dimers at the cell surface.,

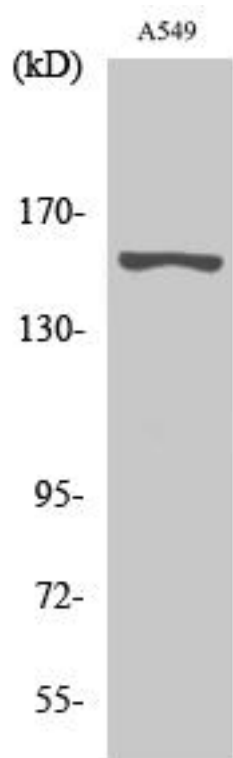
## matters needing attention

Avoid repeated freezing and thawing!

## Usage suggestions

This product can be used in immunological reaction related experiments. For more information, please consult technical personnel.

## Products Images



Western Blot analysis of various cells using GPR116 Monoclonal Antibody