



# GHRH-R Monoclonal Antibody

Catalog No	BYmab-13273
Isotype	IgG
Reactivity	Human;Mouse;Rat
Applications	WB
Gene Name	GHRHR
Protein Name	Growth hormone-releasing hormone receptor
Immunogen	The antiserum was produced against synthesized peptide derived from human GHRHR. AA range:351-400
Specificity	GHRH-R Monoclonal Antibody detects endogenous levels of GHRH-R protein.
Formulation	Liquid in PBS containing 50% glycerol, 0.5% BSA and 0.02% sodium azide.
Source	Monoclonal, Mouse,IgG
Purification	The antibody was affinity-purified from mouse antiserum by affinity-chromatography using epitope-specific immunogen.
Dilution	WB 1:500-2000
Concentration	1 mg/ml
Purity	≥90%
Storage Stability	-20°C/1 year
Synonyms	GHRHR; Growth hormone-releasing hormone receptor; GHRH receptor; Growth hormone-releasing factor receptor; GRF receptor; GRFR
Observed Band	47kD
Cell Pathway	Cell membrane; Multi-pass membrane protein.
Tissue Specificity	Pituitary gland.
Function	disease:Defects in GHRHR are a cause of isolated growth hormone deficiency type IB (IGHD IB) [MIM:262400]; also known as pituitary dwarfism I. IGHD IB is an autosomal recessive deficiency of GH which cause short stature.,function:Receptor for GRF, coupled to G proteins which activate adenyl cyclase. Stimulates somatotroph cell growth, growth hormone gene transcription and growth hormone secretion.,similarity:Belongs to the G-protein coupled receptor 2 family.,tissue specificity:Pituitary gland.,
Background	This gene encodes a receptor for growth hormone-releasing hormone. Binding of this hormone to the receptor leads to synthesis and release of growth hormone. Mutations in this gene have been associated with isolated growth hormone

Nanjing BYabscience technology Co.,Ltd



deficiency (IGHD), also known as Dwarfism of Sindh, a disorder characterized by short stature. [provided by RefSeq, Jun 2010],

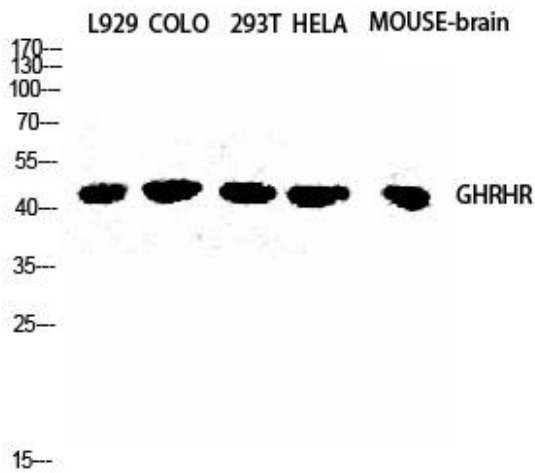
**matters needing attention**

Avoid repeated freezing and thawing!

**Usage suggestions**

This product can be used in immunological reaction related experiments. For more information, please consult technical personnel.

## Products Images



Western Blot analysis of various cells using GHRH-R Monoclonal Antibody