



# Frizzled-3 Monoclonal Antibody

<b>Catalog No</b>	BYmab-13256
<b>Isotype</b>	IgG
<b>Reactivity</b>	Human;Mouse
<b>Applications</b>	WB
<b>Gene Name</b>	FZD3
<b>Protein Name</b>	Frizzled-3
<b>Immunogen</b>	The antiserum was produced against synthesized peptide derived from human FZD3. AA range:141-190
<b>Specificity</b>	Frizzled-3 Monoclonal Antibody detects endogenous levels of Frizzled-3 protein.
<b>Formulation</b>	Liquid in PBS containing 50% glycerol, 0.5% BSA and 0.02% sodium azide.
<b>Source</b>	Monoclonal, Mouse,IgG
<b>Purification</b>	The antibody was affinity-purified from mouse antiserum by affinity-chromatography using epitope-specific immunogen.
<b>Dilution</b>	WB 1:500-2000
<b>Concentration</b>	1 mg/ml
<b>Purity</b>	≥90%
<b>Storage Stability</b>	-20°C/1 year
<b>Synonyms</b>	FZD3; Frizzled-3; Fz-3; hFz3
<b>Observed Band</b>	76kD
<b>Cell Pathway</b>	Membrane; Multi-pass membrane protein. Cell membrane ; Multi-pass membrane protein . Cell surface . Apical cell membrane ; Multi-pass membrane protein. Colocalizes with FZD6 at the apical face of the cell (By similarity). .
<b>Tissue Specificity</b>	Widely expressed. Relatively high expression in the CNS, including regions of the limbic system, in kidney, pancreas, skeletal muscle, uterus and testis.
<b>Function</b>	domain:Lys-Thr-X-X-X-Trp motif is involved in the activation of the Wnt/beta-catenin signaling pathway.,domain:The FZ domain is involved in binding with Wnt ligands.,function:Receptor for Wnt proteins. Most of frizzled receptors are coupled to the beta-catenin canonical signaling pathway, which leads to the activation of disheveled proteins, inhibition of GSK-3 kinase, nuclear accumulation of beta-catenin and activation of Wnt target genes. A second signaling pathway involving PKC and calcium fluxes has been seen for some family members, but it is not yet clear if it represents a distinct pathway or if it can be integrated in the canonical pathway, as PKC seems to be required for Wnt-mediated inactivation of GSK-3 kinase. Both pathways seem to involve

**Nanjing BYabscience technology Co.,Ltd**



interactions with G-proteins. May be involved in transduction and intercellular transmission of polarity information during tissue morphog

#### Background

frizzled class receptor 3(FZD3) Homo sapiens This gene is a member of the frizzled gene family. Members of this family encode seven-transmembrane domain proteins that are receptors for the wingless type MMTV integration site family of signaling proteins. Most frizzled receptors are coupled to the beta-catenin canonical signaling pathway. The function of this protein is unknown, although it may play a role in mammalian hair follicle development. Alternative splicing results in multiple transcript variants. This gene is a susceptibility locus for schizophrenia. [provided by RefSeq, Dec 2010],

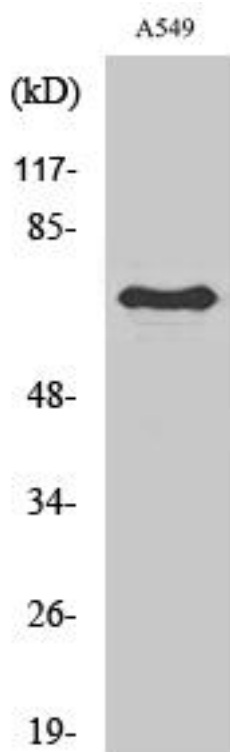
#### matters needing attention

Avoid repeated freezing and thawing!

#### Usage suggestions

This product can be used in immunological reaction related experiments. For more information, please consult technical personnel.

## Products Images



Western Blot analysis of various cells using Frizzled-3 Monoclonal Antibody