



Frizzled-2 Monoclonal Antibody

Catalog No	BYmab-13255
Isotype	IgG
Reactivity	Human;Mouse;Rat
Applications	WB
Gene Name	FZD2
Protein Name	Frizzled-2
Immunogen	The antiserum was produced against synthesized peptide derived from human FZD2. AA range:201-250
Specificity	Frizzled-2 Monoclonal Antibody detects endogenous levels of Frizzled-2 protein.
Formulation	Liquid in PBS containing 50% glycerol, 0.5% BSA and 0.02% sodium azide.
Source	Monoclonal, Mouse,IgG
Purification	The antibody was affinity-purified from mouse antiserum by affinity-chromatography using epitope-specific immunogen.
Dilution	WB 1:500-2000
Concentration	1 mg/ml
Purity	≥90%
Storage Stability	-20°C/1 year
Synonyms	FZD2; Frizzled-2; Fz-2; hFz2; FzE2
Observed Band	55kD
Cell Pathway	Membrane; Multi-pass membrane protein. Cell membrane ; Multi-pass membrane protein .
Tissue Specificity	Widely expressed. In the adult, mainly found in heart, placenta, skeletal muscle, lung, kidney, pancreas, prostate, testis, ovary and colon. In the fetus, expressed in brain, lung and kidney. Low levels in fetal liver.
Function	domain:Lys-Thr-X-X-X-Trp motif is involved in the activation of the Wnt/beta-catenin signaling pathway.,domain:The FZ domain is involved in binding with Wnt ligands.,function:Receptor for Wnt proteins. Most of frizzled receptors are coupled to the beta-catenin canonical signaling pathway, which leads to the activation of disheveled proteins, inhibition of GSK-3 kinase, nuclear accumulation of beta-catenin and activation of Wnt target genes. A second signaling pathway involving PKC and calcium fluxes has been seen for some family members, but it is not yet clear if it represents a distinct pathway or if it can be integrated in the canonical pathway, as PKC seems to be required for Wnt-mediated inactivation of GSK-3 kinase. Both pathways seem to involve

Nanjing BYabscience technology Co.,Ltd



interactions with G-proteins. May be involved in transduction and intercellular transmission of polarity information during tissue morphog

Background

frizzled class receptor 2(FZD2) Homo sapiens This intronless gene is a member of the frizzled gene family. Members of this family encode seven-transmembrane domain proteins that are receptors for the wingless type MMTV integration site family of signaling proteins. This gene encodes a protein that is coupled to the beta-catenin canonical signaling pathway. Competition between the wingless-type MMTV integration site family, member 3A and wingless-type MMTV integration site family, member 5A gene products for binding of this protein is thought to regulate the beta-catenin-dependent and -independent pathways. [provided by RefSeq, Dec 2010],

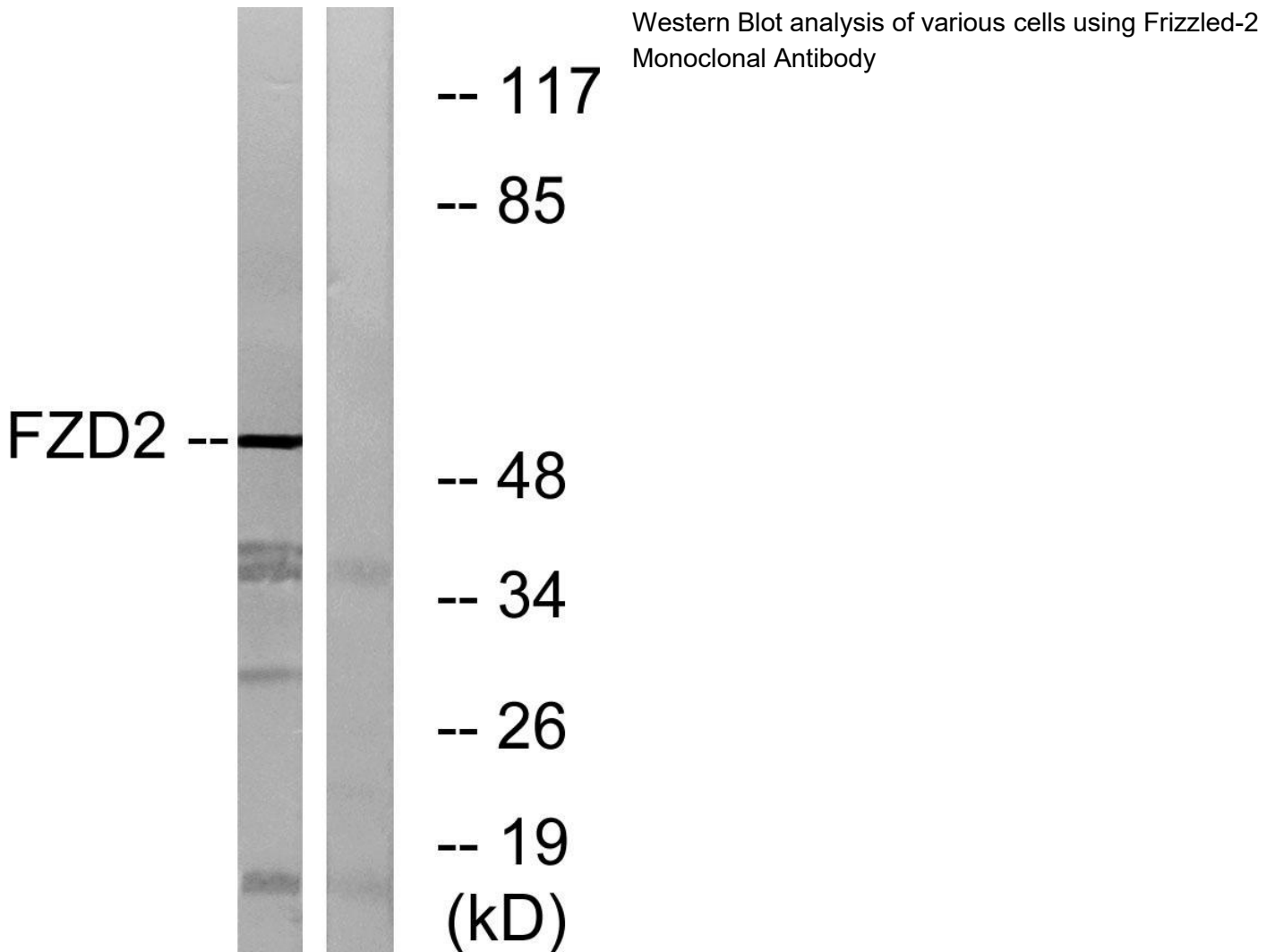
matters needing attention

Avoid repeated freezing and thawing!

Usage suggestions

This product can be used in immunological reaction related experiments. For more information, please consult technical personnel.

Products Images



Nanjing BYabscience technology Co.,Ltd