



# EDG-2 Monoclonal Antibody

<b>Catalog No</b>	BYmab-13203
<b>Isotype</b>	IgG
<b>Reactivity</b>	Human;Rat
<b>Applications</b>	WB
<b>Gene Name</b>	LPAR1
<b>Protein Name</b>	Lysophosphatidic acid receptor 1
<b>Immunogen</b>	The antiserum was produced against synthesized peptide derived from human EDG2. AA range:5-54
<b>Specificity</b>	EDG-2 Monoclonal Antibody detects endogenous levels of EDG-2 protein.
<b>Formulation</b>	Liquid in PBS containing 50% glycerol, 0.5% BSA and 0.02% sodium azide.
<b>Source</b>	Monoclonal, Mouse,IgG
<b>Purification</b>	The antibody was affinity-purified from mouse antiserum by affinity-chromatography using epitope-specific immunogen.
<b>Dilution</b>	WB 1:500-2000
<b>Concentration</b>	1 mg/ml
<b>Purity</b>	≥90%
<b>Storage Stability</b>	-20°C/1 year
<b>Synonyms</b>	LPAR1; EDG2; LPA1; Lysophosphatidic acid receptor 1; LPA receptor 1; LPA-1; Lysophosphatidic acid receptor Edg-2
<b>Observed Band</b>	38kD
<b>Cell Pathway</b>	Cell surface . Cell membrane ; Multi-pass membrane protein . Endosome . Prior to LPA treatment found predominantly at the cell surface. Internalized after LPA treatment. Colocalizes with RALA in endocytic vesicles after LPA treatment. .
<b>Tissue Specificity</b>	Expressed in many adult organs, including brain, heart, colon, small intestine, placenta, prostate, ovary, pancreas, testes, spleen, skeletal muscle, and kidney. Little or no expression in liver, lung, thymus, or peripheral blood leukocytes (PubMed:9070858). Detected in lung fibroblasts from bronchoalveolar fluid from patients with idiopathic pulmonary fibrosis (PubMed:18066075). Detected in bone marrow-derived mesenchymal stem cells (PubMed:19733258).
<b>Function</b>	function:Receptor for lysophosphatidic acid (LPA), a mediator of diverse cellular activities. Seems to be coupled to the G(i)/G(o), G(12)/G(13), and G(q) families of heteromeric G proteins.,similarity:Belongs to the G-protein coupled receptor 1 family.,tissue specificity:Expressed in many adult organs, including brain, heart, colon, small intestine, placenta, prostate, ovary, pancreas, testes, spleen, skeletal

**Nanjing BYabscience technology Co.,Ltd**



muscle, and kidney. Little or no expression in liver, lung, thymus, or peripheral blood leukocytes.,

## Background

lysophosphatidic acid receptor 1(LPAR1) Homo sapiens The integral membrane protein encoded by this gene is a lysophosphatidic acid (LPA) receptor from a group known as EDG receptors. These receptors are members of the G protein-coupled receptor superfamily. Utilized by LPA for cell signaling, EDG receptors mediate diverse biologic functions, including proliferation, platelet aggregation, smooth muscle contraction, inhibition of neuroblastoma cell differentiation, chemotaxis, and tumor cell invasion. Two transcript variants encoding the same protein have been identified for this gene [provided by RefSeq, Jul 2008],

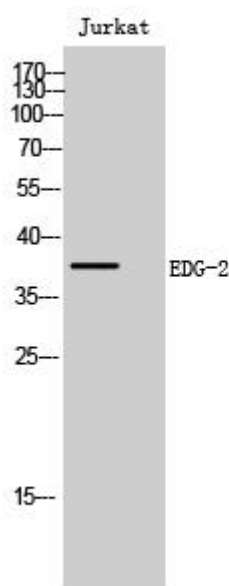
## matters needing attention

Avoid repeated freezing and thawing!

## Usage suggestions

This product can be used in immunological reaction related experiments. For more information, please consult technical personnel.

## Products Images



Western Blot analysis of various cells using EDG-2 Monoclonal Antibody