



# ChemR23 Monoclonal Antibody

Catalog No	BYmab-13176
Isotype	IgG
Reactivity	Human;Mouse;Rat
Applications	WB
Gene Name	CMKLR1
Protein Name	Chemokine-like receptor 1
Immunogen	The antiserum was produced against synthesized peptide derived from human CMKLR1. AA range:221-270
Specificity	ChemR23 Monoclonal Antibody detects endogenous levels of ChemR23 protein.
Formulation	Liquid in PBS containing 50% glycerol, 0.5% BSA and 0.02% sodium azide.
Source	Monoclonal, Mouse,IgG
Purification	The antibody was affinity-purified from mouse antiserum by affinity-chromatography using epitope-specific immunogen.
Dilution	WB 1:500-2000
Concentration	1 mg/ml
Purity	≥90%
Storage Stability	-20°C/1 year
Synonyms	CMKLR1; CHEMR23; DEZ; Chemokine-like receptor 1; G-protein coupled receptor ChemR23; G-protein coupled receptor DEZ
Observed Band	42kD
Cell Pathway	Cell membrane ; Multi-pass membrane protein . Internalizes efficiently in response to RARRES2. .
Tissue Specificity	Prominently expressed in developing osseous and cartilaginous tissue. Also found in adult parathyroid glands. Expressed in cardiovascular system, brain, kidney, gastrointestinal tissues and myeloid tissues. Expressed in a broad array of tissues associated with hematopoietic and immune function including, spleen, thymus, appendix, lymph node, bone marrow and fetal liver. Among leukocyte populations abundant expression in monocyte-derived macrophage and immature dendritic cells (DCs). High expression in blood monocytes and low levels in polymorphonuclear cells and T-cells. Expressed on endothelial cells. Highly expressed in differentiating adipocytes.
Function	developmental stage:Expressed during bone development.,function:Orphan receptor. Could be a chemotactic peptide receptor. May have a function in bone metabolism. Acts as a coreceptor for several SIV strains (SIVMAC316,

Nanjing BYabscience technology Co.,Ltd



SIVMAC239, SIVMACL7E-FR and SIVSM62A), as well as a primary HIV-1 strain (92UG024-2).,similarity:Belongs to the G-protein coupled receptor 1 family.,tissue specificity:Prominently expressed in developing osseous and cartilaginous tissue. Also found in adult parathyroid glands.,

#### Background

developmental stage:Expressed during bone development.,function:Orphan receptor. Could be a chemotactic peptide receptor. May have a function in bone metabolism. Acts as a coreceptor for several SIV strains (SIVMAC316, SIVMAC239, SIVMACL7E-FR and SIVSM62A), as well as a primary HIV-1 strain (92UG024-2).,similarity:Belongs to the G-protein coupled receptor 1 family.,tissue specificity:Prominently expressed in developing osseous and cartilaginous tissue. Also found in adult parathyroid glands.,

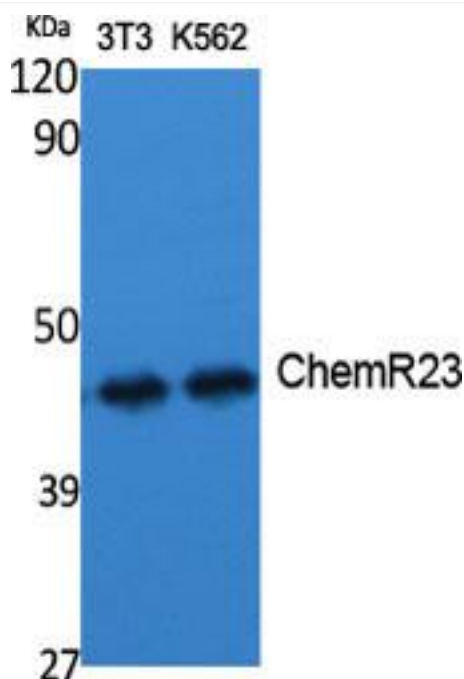
#### matters needing attention

Avoid repeated freezing and thawing!

#### Usage suggestions

This product can be used in immunological reaction related experiments. For more information, please consult technical personnel.

## Products Images



Western Blot analysis of various cells using ChemR23 Monoclonal Antibody

Nanjing BYabs science technology Co.,Ltd