



CB1 Monoclonal Antibody

Catalog No	BYmab-13163
Isotype	IgG
Reactivity	Human;Mouse;Rat;Monkey
Applications	WB
Gene Name	CNR1
Protein Name	Cannabinoid receptor 1
Immunogen	The antiserum was produced against synthesized peptide derived from human CNR1. AA range:151-200
Specificity	CB1 Monoclonal Antibody detects endogenous levels of CB1 protein.
Formulation	Liquid in PBS containing 50% glycerol, 0.5% BSA and 0.02% sodium azide.
Source	Monoclonal, Mouse,IgG
Purification	The antibody was affinity-purified from mouse antiserum by affinity-chromatography using epitope-specific immunogen.
Dilution	WB 1:500-2000
Concentration	1 mg/ml
Purity	≥90%
Storage Stability	-20°C/1 year
Synonyms	CNR1; CNR; Cannabinoid receptor 1; CB-R; CB1; CANN6
Observed Band	53kD
Cell Pathway	Cell membrane ; Multi-pass membrane protein . Membrane raft . Mitochondrion outer membrane . Cell projection, axon . Cell junction, synapse, presynapse . Unexpectedly, in the mitochondria, the C-terminus is located in the mitochondrial intermembrane space, a compartment topologically considered as extracellular. In canonical seven-transmembrane G-protein coupled receptors, the C-terminus is cytosolic (By similarity). Found on presynaptic axon terminals in some GABAergic neurons in the somatosensory cortex (By similarity). .
Tissue Specificity	Widely expressed, with highest levels in fetal and adult brain. Expression levels of isoform 2 and isoform 3 are much lower than those of isoform 1.
Function	function:Involved in cannabinoid-induced CNS effects. Acts by inhibiting adenylate cyclase. Could be a receptor for anandamide. Inhibits L-type Ca(2+) channel current. Isoform 2 and isoform 3 have altered ligand binding.,similarity:Belongs to the G-protein coupled receptor 1 family.,subunit:Interacts (via C-terminus) with CNRIP1.,tissue specificity:Widely expressed.,

Nanjing BYabscience technology Co.,Ltd



Background

This gene encodes one of two cannabinoid receptors. The cannabinoids, principally delta-9-tetrahydrocannabinol and synthetic analogs, are psychoactive ingredients of marijuana. The cannabinoid receptors are members of the guanine-nucleotide-binding protein (G-protein) coupled receptor family, which inhibit adenylate cyclase activity in a dose-dependent, stereoselective and pertussis toxin-sensitive manner. The two receptors have been found to be involved in the cannabinoid-induced CNS effects (including alterations in mood and cognition) experienced by users of marijuana. Multiple transcript variants encoding two different protein isoforms have been described for this gene. [provided by RefSeq, May 2009],

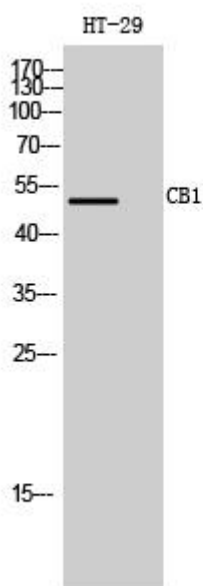
matters needing attention

Avoid repeated freezing and thawing!

Usage suggestions

This product can be used in immunological reaction related experiments. For more information, please consult technical personnel.

Products Images



Western Blot analysis of various cells using CB1 Monoclonal Antibody

Nanjing BYabscience technology Co.,Ltd

网址: www.njbybio.com

官方热线: 025-5229-8998

监督电话: 15950492658