



BRS-3 Monoclonal Antibody

Catalog No	BYmab-13159
Isotype	IgG
Reactivity	Human;Rat;Mouse;
Applications	WB
Gene Name	BRS3
Protein Name	Bombesin receptor subtype-3
Immunogen	The antiserum was produced against synthesized peptide derived from human BRS3. AA range:161-210
Specificity	BRS-3 Monoclonal Antibody detects endogenous levels of BRS-3 protein.
Formulation	Liquid in PBS containing 50% glycerol, 0.5% BSA and 0.02% sodium azide.
Source	Monoclonal, Mouse,IgG
Purification	The antibody was affinity-purified from mouse antiserum by affinity-chromatography using epitope-specific immunogen.
Dilution	WB 1:500-2000
Concentration	1 mg/ml
Purity	≥90%
Storage Stability	-20°C/1 year
Synonyms	BRS3; Bombesin receptor subtype-3; BRS-3
Observed Band	44kD
Cell Pathway	Cell membrane; Multi-pass membrane protein.
Tissue Specificity	In germ cells in testis. Lung carcinoma cells.
Function	function:Role in sperm cell division, maturation, or function. This receptor mediates its action by association with G proteins that activate a phosphatidylinositol-calcium second messenger system.,similarity:Belongs to the G-protein coupled receptor 1 family.,tissue specificity:In germ cells in testis. Lung carcinoma cells.,
Background	The protein encoded by this gene is a G protein-coupled membrane receptor that binds bombesin-like peptides. This binding results in activation of a phosphatidylinositol-calcium second messenger system, with physiological effects including regulation of metabolic rate, glucose metabolism, and hypertension. [provided by RefSeq, Sep 2011],

Nanjing BYabscience technology Co.,Ltd



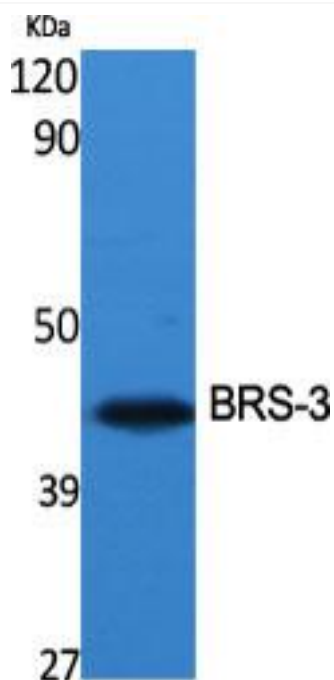
matters needing attention

Avoid repeated freezing and thawing!

Usage suggestions

This product can be used in immunological reaction related experiments. For more information, please consult technical personnel.

Products Images



Western Blot analysis of various cells using BRS-3 Monoclonal Antibody