



AR-β1 Monoclonal Antibody

Catalog No	BYmab-13150
Isotype	IgG
Reactivity	Human;Mouse;Rat
Applications	WB
Gene Name	ADRB1
Protein Name	Beta-1 adrenergic receptor
Immunogen	The antiserum was produced against synthesized peptide derived from human ADRB1. AA range:281-330
Specificity	AR- β 1 Monoclonal Antibody detects endogenous levels of AR- β 1 protein.
Formulation	Liquid in PBS containing 50% glycerol, 0.5% BSA and 0.02% sodium azide.
Source	Monoclonal, Mouse,IgG
Purification	The antibody was affinity-purified from mouse antiserum by affinity-chromatography using epitope-specific immunogen.
Dilution	WB 1:500-2000
Concentration	1 mg/ml
Purity	≥90%
Storage Stability	-20°C/1 year
Synonyms	ADRB1; ADRB1R; B1AR; Beta-1 adrenergic receptor; Beta-1 adrenoreceptor; Beta-1 adrenoceptor
Observed Band	51kD
Cell Pathway	Cell membrane ; Multi-pass membrane protein . Early endosome. Colocalizes with RAPGEF2 at the plasma membrane (By similarity). Localized at the plasma membrane. Found in the Golgi upon GOPC overexpression. .
Tissue Specificity	Placenta,
Function	domain:The PDZ domain-binding motif mediates competitive interactions with GOPC, MAGI3 and DLG4 and plays a role in subcellular location of the receptor.,function:Beta-adrenergic receptors mediate the catecholamine-induced activation of adenylate cyclase through the action of G proteins. This receptor binds epinephrine and norepinephrine with approximately equal affinity.,PTM:Homologous desensitization of the receptor is mediated by its phosphorylation by beta-adrenergic receptor kinase.,similarity:Belongs to the G-protein coupled receptor 1 family.,subcellular location:Localized at the plasma membrane. Found in the Golgi upon GOPC overexpression.,subunit:Interacts with

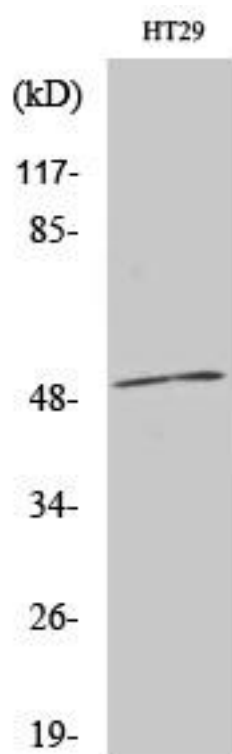
Nanjing BYabscience technology Co.,Ltd



GOPC, MAGI3 and DLG4.,

Background	The adrenergic receptors (subtypes alpha 1, alpha 2, beta 1, and beta 2) are a prototypic family of guanine nucleotide binding regulatory protein-coupled receptors that mediate the physiological effects of the hormone epinephrine and the neurotransmitter norepinephrine. Specific polymorphisms in this gene have been shown to affect the resting heart rate and can be involved in heart failure. [provided by RefSeq, Jul 2008],
matters needing attention	Avoid repeated freezing and thawing!
Usage suggestions	This product can be used in immunological reaction related experiments. For more information, please consult technical personnel.

Products Images



Western Blot analysis of various cells using AR-β1 Monoclonal Antibody

Nanjing BYabscience technology Co.,Ltd