



# IL-2R $\alpha$ (phospho Ser268) Monoclonal Antibody

Catalog No	BYmab-13027
Isotype	IgG
Reactivity	Human;Rat;Mouse;
Applications	WB
Gene Name	IL2RA
Protein Name	Interleukin-2 receptor subunit alpha
Immunogen	The antiserum was produced against synthesized peptide derived from human IL-2R $\alpha$ /CD25 around the phosphorylation site of Ser268. AA range:223-272
Specificity	Phospho-IL-2R $\alpha$ (S268) Monoclonal Antibody detects endogenous levels of IL-2R $\alpha$ protein only when phosphorylated at S268.
Formulation	Liquid in PBS containing 50% glycerol, 0.5% BSA and 0.02% sodium azide.
Source	Monoclonal, Mouse,IgG
Purification	The antibody was affinity-purified from mouse antiserum by affinity-chromatography using epitope-specific immunogen.
Dilution	WB 1:500-2000
Concentration	1 mg/ml
Purity	$\geq 90\%$
Storage Stability	-20°C/1 year
Synonyms	IL2RA; Interleukin-2 receptor subunit alpha; IL-2 receptor subunit alpha; IL-2-RA; IL-2R subunit alpha; IL2-RA; TAC antigen; p55; CD antigen CD25
Observed Band	55kD
Cell Pathway	Membrane; Single-pass type I membrane protein.
Tissue Specificity	Thymus,
Function	disease:Genetic variations in IL2RA are associated with susceptibility to insulin-dependent diabetes mellitus type 10 (IDDM10) [MIM:601942].,function:Receptor for interleukin-2.,online information:IL2RA mutation db,similarity:Contains 2 Sushi (CCP/SCR) domains.,subunit:Non-covalent dimer of an alpha and a beta chains. IL2R exists in 3 different forms: a high affinity dimer, an intermediate affinity monomer (beta chain), and a low affinity monomer (alpha chain). The high and intermediate affinity forms also associate with a gamma chain.,

**Nanjing BYabscience technology Co.,Ltd**

网址: [www.njbybio.com](http://www.njbybio.com)

官方热线: 025-5229-8998

监督电话: 15950492658



## Background

The interleukin 2 (IL2) receptor alpha (IL2RA) and beta (IL2RB) chains, together with the common gamma chain (IL2RG), constitute the high-affinity IL2 receptor. Homodimeric alpha chains (IL2RA) result in low-affinity receptor, while homodimeric beta (IL2RB) chains produce a medium-affinity receptor. Normally an integral-membrane protein, soluble IL2RA has been isolated and determined to result from extracellular proteolysis. Alternately-spliced IL2RA mRNAs have been isolated, but the significance of each is presently unknown. Mutations in this gene are associated with interleukin 2 receptor alpha deficiency.[provided by RefSeq, Nov 2009],

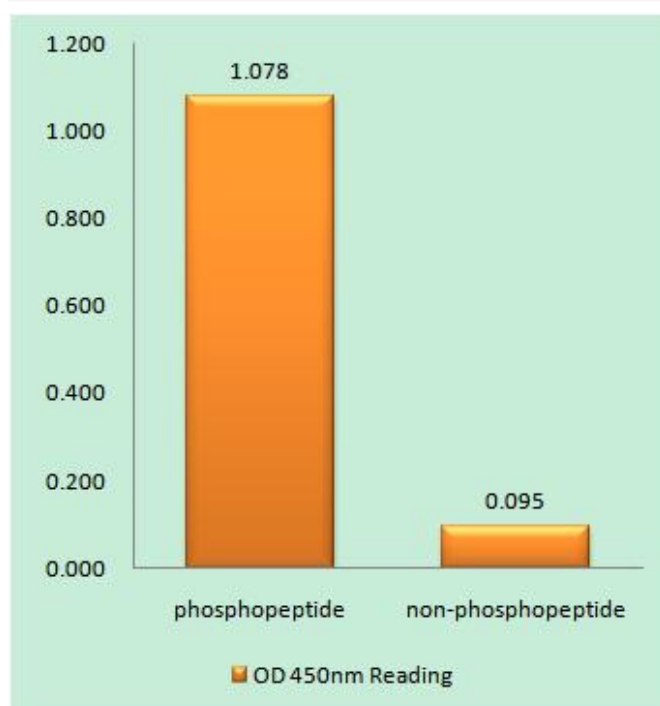
## matters needing attention

Avoid repeated freezing and thawing!

## Usage suggestions

This product can be used in immunological reaction related experiments. For more information, please consult technical personnel.

## Products Images



Western Blot analysis of various cells using IL-2R  $\alpha$  (phospho Ser268) Monoclonal Antibody

**Nanjing BYabscience technology Co.,Ltd**

网址: [www.njbybio.com](http://www.njbybio.com)

官方热线: 025-5229-8998

监督电话: 15950492658