



IL-13R α 1 (phospho Tyr405) Monoclonal Antibody

Catalog No	BYmab-13026
Isotype	IgG
Reactivity	Human;Mouse;Rat
Applications	WB
Gene Name	IL13RA1
Protein Name	Interleukin-13 receptor subunit alpha-1
Immunogen	The antiserum was produced against synthesized peptide derived from human IL-13R alpha1 around the phosphorylation site of Tyr405. AA range:371-420
Specificity	Phospho-IL-13R α 1 (Y405) Monoclonal Antibody detects endogenous levels of IL-13R α 1 protein only when phosphorylated at Y405.
Formulation	Liquid in PBS containing 50% glycerol, 0.5% BSA and 0.02% sodium azide.
Source	Monoclonal, Mouse,IgG
Purification	The antibody was affinity-purified from mouse antiserum by affinity-chromatography using epitope-specific immunogen.
Dilution	WB 1:500-2000
Concentration	1 mg/ml
Purity	$\geq 90\%$
Storage Stability	-20°C/1 year
Synonyms	IL13RA1; IL13R; IL13RA; Interleukin-13 receptor subunit alpha-1; IL-13 receptor subunit alpha-1; IL-13R subunit alpha-1; IL-13R-alpha-1; IL-13RA1; Cancer/testis antigen 19; CT19; CD antigen CD213a1
Observed Band	49kD
Cell Pathway	Membrane; Single-pass type I membrane protein.
Tissue Specificity	Ubiquitous. Highest levels in heart, liver, skeletal muscle and ovary; lowest levels in brain, lung and kidney. Also found in B-cells, T-cells and endothelial cells.
Function	domain:The box 1 motif is required for JAK interaction and/or activation.,domain:The WSXWS motif appears to be necessary for proper protein folding and thereby efficient intracellular transport and cell-surface receptor binding.,function:Binds IL13 with a low affinity. Together with IL4R-alpha can form a functional receptor for IL13. Also serves as an alternate accessory protein to the common cytokine receptor gamma chain for IL4 signaling, but cannot replace the function of gamma C in allowing enhanced IL2 binding activity.,similarity:Belongs to the type I cytokine receptor family. Type 5 subfamily.,subunit:Interleukin 13

Nanjing BYabscience technology Co.,Ltd



receptor is a complex of IL4R, IL13RA1, and possibly other components. Interacts with TRAF3IP1.,tissue specificity:Ubiquitous. Highest levels in heart, liver, skeletal muscle and ovary; lowest levels in brain, lung and kidney. Also found in B-cells, T-cells and endothe

Background

The protein encoded by this gene is a subunit of the interleukin 13 receptor. This subunit forms a receptor complex with IL4 receptor alpha, a subunit shared by IL13 and IL4 receptors. This subunit serves as a primary IL13-binding subunit of the IL13 receptor, and may also be a component of IL4 receptors. This protein has been shown to bind tyrosine kinase TYK2, and thus may mediate the signaling processes that lead to the activation of JAK1, STAT3 and STAT6 induced by IL13 and IL4. [provided by RefSeq, Jul 2008],

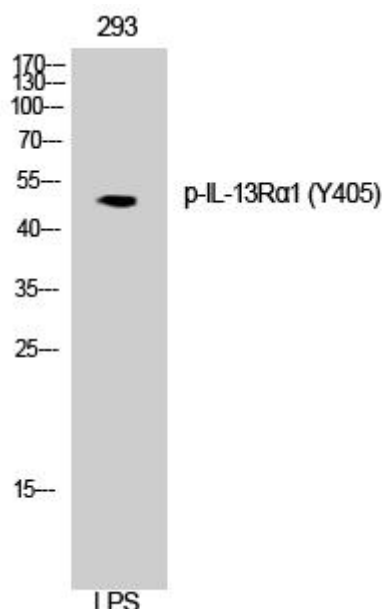
matters needing attention

Avoid repeated freezing and thawing!

Usage suggestions

This product can be used in immunological reaction related experiments. For more information, please consult technical personnel.

Products Images



Western Blot analysis of various cells using IL-13R α 1 (phospho Tyr405) Monoclonal Antibody