



# MAG Monoclonal Antibody

Catalog No	BYmab-12863
Isotype	IgG
Reactivity	Human;Mouse;Rat
Applications	WB
Gene Name	MAG
Protein Name	Myelin-associated glycoprotein
Immunogen	The antiserum was produced against synthesized peptide derived from the C-terminal region of human MAG. AA range:501-550
Specificity	MAG Monoclonal Antibody detects endogenous levels of MAG protein.
Formulation	Liquid in PBS containing 50% glycerol, 0.5% BSA and 0.02% sodium azide.
Source	Monoclonal, Mouse,IgG
Purification	The antibody was affinity-purified from mouse antiserum by affinity-chromatography using epitope-specific immunogen.
Dilution	WB 1:500-2000
Concentration	1 mg/ml
Purity	≥90%
Storage Stability	-20°C/1 year
Synonyms	MAG; GMA; Myelin-associated glycoprotein; Siglec-4a
Observed Band	70kD
Cell Pathway	Cell membrane ; Single-pass type I membrane protein . Membrane raft .
Tissue Specificity	Both isoform 1 and isoform 2 are detected in myelinated structures in the central and peripheral nervous system, in periaxonal myelin and at Schmidt-Lanterman incisures (PubMed:9495552, PubMed:6200494). Detected in optic nerve, in oligodendroglia and in periaxonal myelin sheaths (PubMed:6200494). Detected in compact myelin (at protein level) (PubMed:6200494). Both isoform 1 and isoform 2 are detected in the central and peripheral nervous system (PubMed:9495552).
Function	function:Adhesion molecule in postnatal neural development that mediates sialic-acid dependent cell-cell interactions between neuronal and myelinating cells. Preferentially binds to alpha-2,3-linked sialic acid.,online information:Siglec-4,similarity:Belongs to the immunoglobulin superfamily. SIGLEC (sialic acid binding Ig-like lectin) family.,similarity:Contains 1 Ig-like V-type (immunoglobulin-like) domain.,similarity:Contains 4 Ig-like C2-type (immunoglobulin-like) domains.,subunit:Binds to RTN4R.,

Nanjing BYabscience technology Co.,Ltd



## Background

The protein encoded by this gene is a type I membrane protein and member of the immunoglobulin superfamily. It is thought to be involved in the process of myelination. It is a lectin that binds to sialylated glycoconjugates and mediates certain myelin-neuron cell-cell interactions. Three alternatively spliced transcripts encoding different isoforms have been described for this gene. [provided by RefSeq, Nov 2010],

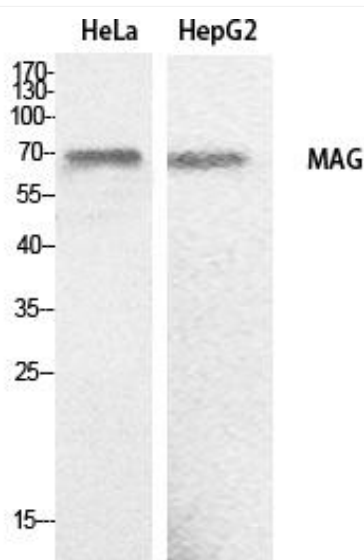
## matters needing attention

Avoid repeated freezing and thawing!

## Usage suggestions

This product can be used in immunological reaction related experiments. For more information, please consult technical personnel.

## Products Images



Western Blot analysis of various cells using MAG Monoclonal Antibody

**Nanjing BYabscience technology Co.,Ltd**

网址: [www.njbybio.com](http://www.njbybio.com)

官方热线: 025-5229-8998

监督电话: 15950492658