



PSP Monoclonal Antibody

Catalog No	BYmab-12856
Isotype	IgG
Reactivity	Human;Rat;Mouse;
Applications	WB
Gene Name	PSPN
Protein Name	Persephin
Immunogen	The antiserum was produced against synthesized peptide derived from the C-terminal region of human PSPN. AA range:101-150
Specificity	PSP Monoclonal Antibody detects endogenous levels of PSP protein.
Formulation	Liquid in PBS containing 50% glycerol, 0.5% BSA and 0.02% sodium azide.
Source	Monoclonal, Mouse,IgG
Purification	The antibody was affinity-purified from mouse antiserum by affinity-chromatography using epitope-specific immunogen.
Dilution	WB 1:500-2000
Concentration	1 mg/ml
Purity	≥90%
Storage Stability	-20°C/1 year
Synonyms	PSPN; Persephin; PSP
Observed Band	16kD
Cell Pathway	Secreted.
Tissue Specificity	
Function	function:Exhibits neurotrophic activity on mesencephalic dopaminergic and motor neurons.,similarity:Belongs to the TGF-beta family. GDNF subfamily.,subunit:Homodimer; disulfide-linked.,
Background	persephin(PSPN) Homo sapiens This gene encodes a secreted ligand of the GDNF (glial cell line-derived neurotrophic factor) subfamily and TGF-beta (transforming growth factor-beta) superfamily of proteins. The encoded preproprotein is proteolytically processed to generate the mature protein. This protein signals through the RET receptor tyrosine kinase and a GPI-linked coreceptor, and promotes survival of neuronal populations. This protein may play a role in cell death, and nervous system development and function. Elevated

Nanjing BYabscience technology Co.,Ltd



expression of this gene has been observed in oral squamous cell carcinoma.
[provided by RefSeq, Aug 2016],

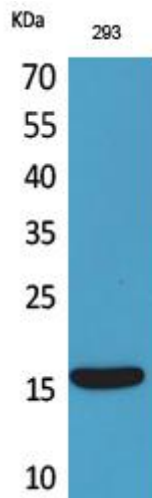
matters needing attention

Avoid repeated freezing and thawing!

Usage suggestions

This product can be used in immunological reaction related experiments. For more information, please consult technical personnel.

Products Images



Western Blot analysis of various cells using PSP Monoclonal Antibody