



# SV2C Monoclonal Antibody

Catalog No	BYmab-12850
Isotype	IgG
Reactivity	Human;Mouse;Rat
Applications	WB
Gene Name	SV2C
Protein Name	Synaptic vesicle glycoprotein 2C
Immunogen	Synthesized peptide derived from the Internal region of human SV2C. AA range 330-390
Specificity	SV2C Monoclonal Antibody detects endogenous levels of SV2C protein.
Formulation	Liquid in PBS containing 50% glycerol, 0.5% BSA and 0.02% sodium azide.
Source	Monoclonal, Mouse,IgG
Purification	The antibody was affinity-purified from mouse antiserum by affinity-chromatography using epitope-specific immunogen.
Dilution	WB 1:500-2000
Concentration	1 mg/ml
Purity	≥90%
Storage Stability	-20°C/1 year
Synonyms	SV2C; KIAA1054; Synaptic vesicle glycoprotein 2C
Observed Band	82kD
Cell Pathway	Cytoplasmic vesicle, secretory vesicle, synaptic vesicle membrane ; Multi-pass membrane protein . Enriched in small synaptic vesicles and adrenal microsomes, not present in chromaffin granules. Associated with both insulin granules and synaptic-like microvesicles in insulin-secreting cells of the pancreas. .
Tissue Specificity	Brain,
Function	function:Plays a role in the control of regulated secretion in neural and endocrine cells, enhancing selectively low-frequency neurotransmission. Positively regulates vesicle fusion by maintaining the readily releasable pool of secretory vesicles.,PTM:N-glycosylated.,similarity:Belongs to the major facilitator superfamily.,subcellular location:Enriched in small synaptic vesicles and adrenal microsomes, not present in chromaffin granules. Associated with both insulin granules and synaptic-like microvesicles in insulin-secreting cells of the pancreas.,subunit:Interacts with SYT1 in a calcium-dependent manner.,

Nanjing BYabscience technology Co.,Ltd



## Background

function: Plays a role in the control of regulated secretion in neural and endocrine cells, enhancing selectively low-frequency neurotransmission. Positively regulates vesicle fusion by maintaining the readily releasable pool of secretory vesicles., PTM: N-glycosylated., similarity: Belongs to the major facilitator superfamily., subcellular location: Enriched in small synaptic vesicles and adrenal microsomes, not present in chromaffin granules. Associated with both insulin granules and synaptic-like microvesicles in insulin-secreting cells of the pancreas., subunit: Interacts with SYT1 in a calcium-dependent manner.,

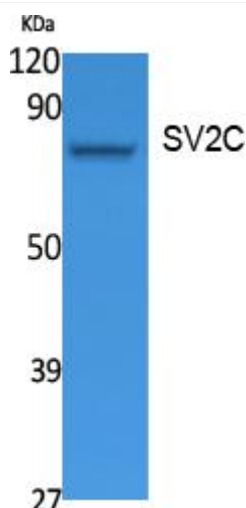
## matters needing attention

Avoid repeated freezing and thawing!

## Usage suggestions

This product can be used in immunological reaction related experiments. For more information, please consult technical personnel.

## Products Images



Western Blot analysis of various cells using SV2C Monoclonal Antibody