



TRH-R1 Monoclonal Antibody

Catalog No	BYmab-12829
Isotype	IgG
Reactivity	Human;Mouse;Rat;Monkey
Applications	WB
Gene Name	TRHR
Protein Name	Thyrotropin-releasing hormone receptor
Immunogen	The antiserum was produced against synthesized peptide derived from human TRHR. AA range:195-244
Specificity	TRH-R1 Monoclonal Antibody detects endogenous levels of TRH-R1 protein.
Formulation	Liquid in PBS containing 50% glycerol, 0.5% BSA and 0.02% sodium azide.
Source	Monoclonal, Mouse,IgG
Purification	The antibody was affinity-purified from mouse antiserum by affinity-chromatography using epitope-specific immunogen.
Dilution	WB 1:500-2000
Concentration	1 mg/ml
Purity	≥90%
Storage Stability	-20°C/1 year
Synonyms	TRHR; Thyrotropin-releasing hormone receptor; TRH-R; Thyroliberin receptor
Observed Band	50kD
Cell Pathway	Cell membrane ; Multi-pass membrane protein .
Tissue Specificity	Brain,Pituitary,Placenta,
Function	function:Receptor for thyrotropin-releasing hormone. This receptor is mediated by G proteins which activate a phosphatidylinositol-calcium second messenger system.,similarity:Belongs to the G-protein coupled receptor 1 family.,
Background	This gene encodes a G protein-coupled receptor for thyrotropin-releasing hormone (TRH). Upon binding to TRH, this receptor activates the inositol phospholipid-calcium-protein kinase C transduction pathway. Mutations in this gene have been associated with generalized thyrotropin-releasing hormone resistance. [provided by RefSeq, Sep 2011],

Nanjing BYabscience technology Co.,Ltd

网址: www.njbybio.com

官方热线: 025-5229-8998

监督电话: 15950492658



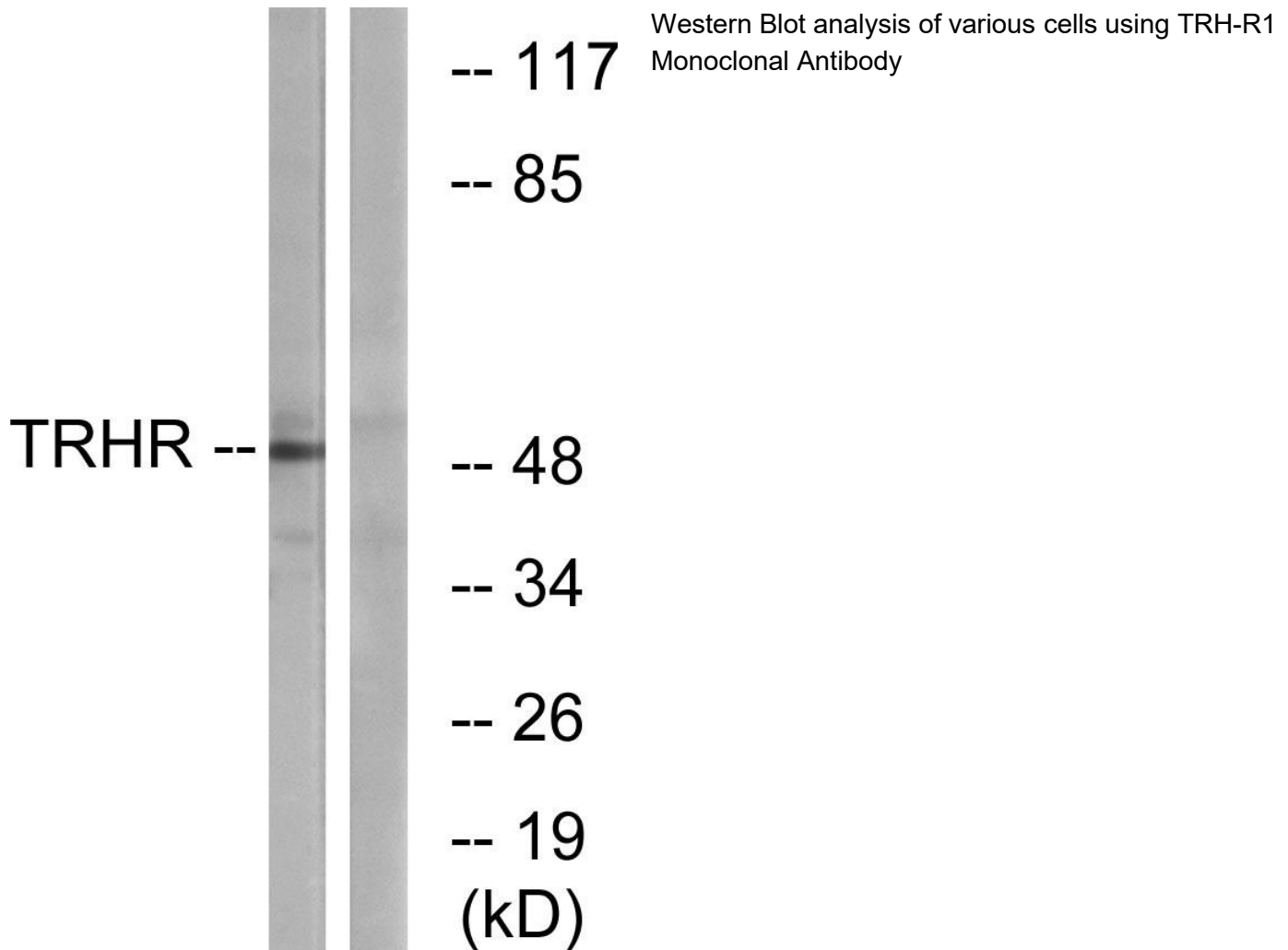
matters needing attention

Avoid repeated freezing and thawing!

Usage suggestions

This product can be used in immunological reaction related experiments. For more information, please consult technical personnel.

Products Images



Nanjing BYabscience technology Co.,Ltd

网址: www.njbybio.com

官方热线: 025-5229-8998

监督电话: 15950492658