



SR-1A Monoclonal Antibody

| | |
|--------------------|--|
| Catalog No | BYmab-12810 |
| Isotype | IgG |
| Reactivity | Human;Mouse;Rat |
| Applications | WB |
| Gene Name | HTR1A |
| Protein Name | 5-hydroxytryptamine receptor 1A |
| Immunogen | The antiserum was produced against synthesized peptide derived from human 5-HT-1A. AA range:291-340 |
| Specificity | SR-1A Monoclonal Antibody detects endogenous levels of SR-1A protein. |
| Formulation | Liquid in PBS containing 50% glycerol, 0.5% BSA and 0.02% sodium azide. |
| Source | Monoclonal, Mouse,IgG |
| Purification | The antibody was affinity-purified from mouse antiserum by affinity-chromatography using epitope-specific immunogen. |
| Dilution | WB 1:500-2000 |
| Concentration | 1 mg/ml |
| Purity | ≥90% |
| Storage Stability | -20°C/1 year |
| Synonyms | HTR1A; ADRB2RL1; ADRBRL1; 5-hydroxytryptamine receptor 1A; 5-HT-1A; 5-HT1A; G-21; Serotonin receptor 1A |
| Observed Band | 46kD |
| Cell Pathway | Cell membrane ; Multi-pass membrane protein . Cell projection, dendrite . |
| Tissue Specificity | Detected in lymph nodes, thymus and spleen. Detected in activated T-cells, but not in resting T-cells. |
| Function | function:This is one of the several different receptors for 5-hydroxytryptamine (serotonin), a biogenic hormone that functions as a neurotransmitter, a hormone, and a mitogen. The activity of this receptor is mediated by G proteins that inhibit adenylate cyclase activity.,similarity:Belongs to the G-protein coupled receptor 1 family., |
| Background | This gene encodes a G protein-coupled receptor for 5-hydroxytryptamine (serotonin), and belongs to the 5-hydroxytryptamine receptor subfamily. Serotonin has been implicated in a number of physiologic processes and pathologic conditions. Inactivation of this gene in mice results in behavior consistent with an |

Nanjing BYabscience technology Co.,Ltd



increased anxiety and stress response. Mutation in the promoter of this gene has been associated with menstrual cycle-dependent periodic fevers. [provided by RefSeq, Jun 2012],

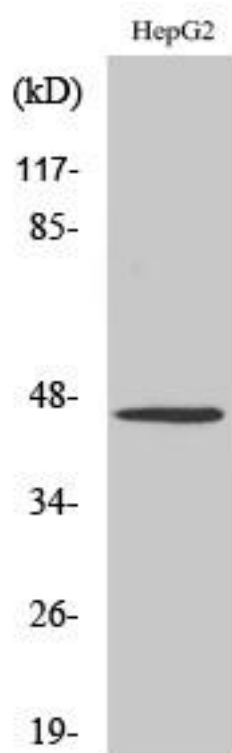
matters needing attention

Avoid repeated freezing and thawing!

Usage suggestions

This product can be used in immunological reaction related experiments. For more information, please consult technical personnel.

Products Images



Western Blot analysis of various cells using SR-1A Monoclonal Antibody