



# RAI3 Monoclonal Antibody

<b>Catalog No</b>	BYmab-12798
<b>Isotype</b>	IgG
<b>Reactivity</b>	Human;Mouse;Rat
<b>Applications</b>	WB
<b>Gene Name</b>	GPRC5A
<b>Protein Name</b>	Retinoic acid-induced protein 3
<b>Immunogen</b>	The antiserum was produced against synthesized peptide derived from human GPRC5A. AA range:140-189
<b>Specificity</b>	RAI3 Monoclonal Antibody detects endogenous levels of RAI3 protein.
<b>Formulation</b>	Liquid in PBS containing 50% glycerol, 0.5% BSA and 0.02% sodium azide.
<b>Source</b>	Monoclonal, Mouse,IgG
<b>Purification</b>	The antibody was affinity-purified from mouse antiserum by affinity-chromatography using epitope-specific immunogen.
<b>Dilution</b>	WB 1:500-2000
<b>Concentration</b>	1 mg/ml
<b>Purity</b>	≥90%
<b>Storage Stability</b>	-20°C/1 year
<b>Synonyms</b>	GPRC5A; GPCR5A; RAI3; RAIG1; Retinoic acid-induced protein 3; G-protein coupled receptor family C group 5 member A; Orphan G-protein-coupling receptor PEIG-1; Retinoic acid-induced gene 1 protein; RAIG-1
<b>Observed Band</b>	40kD
<b>Cell Pathway</b>	Cell membrane ; Multi-pass membrane protein . Cytoplasmic vesicle membrane ; Multi-pass membrane protein . Localized in perinuclear vesicles, probably Golgi-associated vesicles. .
<b>Tissue Specificity</b>	Expressed at high level in fetal and adult lung tissues but repressed in most human lung cancers (PubMed:9857033, PubMed:18000218). Constitutively expressed in fetal kidney and adult placenta, kidney, prostate, testis, ovary, small intestine, colon, stomach, and spinal cord at low to moderate levels. Not detectable in fetal heart, brain, and liver and adult heart, brain, liver, skeletal muscle, pancreas, spleen, thymus, and peripheral leukocytes. According to PubMed:10783259, expressed at low but detectable level in pancreas and heart.
<b>Function</b>	function:Unknown. This G-protein coupled receptor could be involved in modulating differentiation and maintaining homeostasis of epithelial cells. The

**Nanjing BYabscience technology Co.,Ltd**



comparable expression level in fetal lung and kidney with adult tissues suggests a possible role in embryonic development and maturation of these organs. This retinoic acid-inducible GPCR provide evidence for a possible interaction between retinoid and G-protein signaling pathways.,induction:By all-trans retinoic acid (ATRA).,similarity:Belongs to the G-protein coupled receptor 3 family.,subcellular location:Localized in the plasma membrane and perinuclear vesicles.,tissue specificity:Expressed at high level in fetal and adult lung tissues. Constitutively expressed in fetal kidney and adult placenta, kidney, prostate, testis, ovary, small intestine, colon, stomach, and spinal chord at low to moderate levels. Not detectable in fetal heart,

#### Background

This gene encodes a member of the type 3 G protein-coupling receptor family, characterized by the signature 7-transmembrane domain motif. The encoded protein may be involved in interaction between retinoid acid and G protein signalling pathways. Retinoic acid plays a critical role in development, cellular growth, and differentiation. This gene may play a role in embryonic development and epithelial cell differentiation. [provided by RefSeq, Jul 2008],

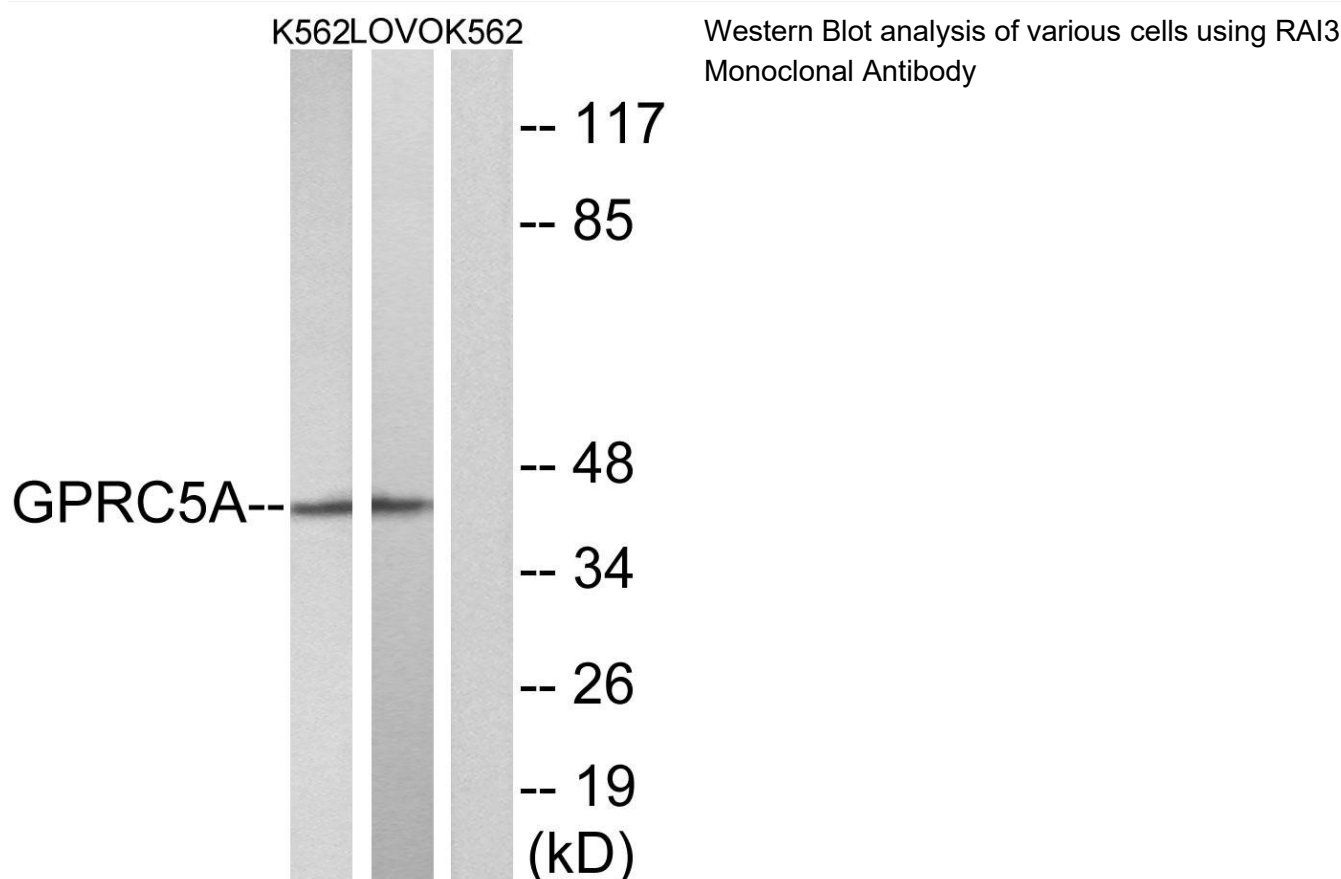
#### matters needing attention

Avoid repeated freezing and thawing!

#### Usage suggestions

This product can be used in immunological reaction related experiments. For more information, please consult technical personnel.

### Products Images



Nanjing BYabscience technology Co.,Ltd