



# NPY2-R Monoclonal Antibody

Catalog No	BYmab-12778
Isotype	IgG
Reactivity	Human;Mouse;Rat
Applications	WB
Gene Name	NPY2R
Protein Name	Neuropeptide Y receptor type 2
Immunogen	The antiserum was produced against synthesized peptide derived from human NPY2R. AA range:1-50
Specificity	NPY2-R Monoclonal Antibody detects endogenous levels of NPY2-R protein.
Formulation	Liquid in PBS containing 50% glycerol, 0.5% BSA and 0.02% sodium azide.
Source	Monoclonal, Mouse,IgG
Purification	The antibody was affinity-purified from mouse antiserum by affinity-chromatography using epitope-specific immunogen.
Dilution	WB 1:500-2000
Concentration	1 mg/ml
Purity	≥90%
Storage Stability	-20°C/1 year
Synonyms	NPY2R; Neuropeptide Y receptor type 2; NPY2-R; NPY-Y2 receptor; Y2 receptor
Observed Band	43kD
Cell Pathway	Cell membrane; Multi-pass membrane protein.
Tissue Specificity	High levels in amygdala, corpus callosum, hippocampus and subthalamic nucleus. Also detectable in caudate nucleus, hypothalamus and substantia nigra.
Function	function:Receptor for neuropeptide Y and peptide YY. The rank order of affinity of this receptor for pancreatic polypeptides is PYY > NPY > PYY (3-36) > NPY (2-36) > [Ile-31, Gln-34] PP > [Leu-31, Pro-34] NPY > PP, [Pro-34] PYY and NPY free acid.,similarity:Belongs to the G-protein coupled receptor 1 family.,tissue specificity:High levels in amygdala, corpus callosum, hippocampus and subthalamic nucleus. Also detectable in caudate nucleus, hypothalamus and substantia nigra.,
Background	function:Receptor for neuropeptide Y and peptide YY. The rank order of affinity of this receptor for pancreatic polypeptides is PYY > NPY > PYY (3-36) > NPY (2-36) > [Ile-31, Gln-34] PP > [Leu-31, Pro-34] NPY > PP, [Pro-34] PYY and NPY free

Nanjing BYabscience technology Co.,Ltd



acid.,similarity:Belongs to the G-protein coupled receptor 1 family.,tissue specificity:High levels in amygdala, corpus callosum, hippocampus and subthalamic nucleus. Also detectable in caudate nucleus, hypothalamus and substantia nigra.,

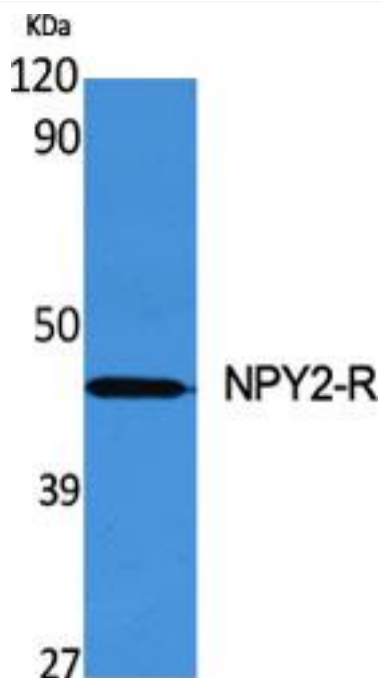
**matters needing attention**

Avoid repeated freezing and thawing!

**Usage suggestions**

This product can be used in immunological reaction related experiments. For more information, please consult technical personnel.

## Products Images



Western Blot analysis of various cells using NPY2-R Monoclonal Antibody

**Nanjing BYabscience technology Co.,Ltd**

网址: [www.njbybio.com](http://www.njbybio.com)

官方热线: 025-5229-8998

监督电话: 15950492658