



# NPDC-1 Monoclonal Antibody

<b>Catalog No</b>	BYmab-12775
<b>Isotype</b>	IgG
<b>Reactivity</b>	Human;Mouse;Rat
<b>Applications</b>	WB
<b>Gene Name</b>	NPDC1
<b>Protein Name</b>	Neural proliferation differentiation and control protein 1
<b>Immunogen</b>	The antiserum was produced against synthesized peptide derived from human NPDC1. AA range:189-238
<b>Specificity</b>	NPDC-1 Monoclonal Antibody detects endogenous levels of NPDC-1 protein.
<b>Formulation</b>	Liquid in PBS containing 50% glycerol, 0.5% BSA and 0.02% sodium azide.
<b>Source</b>	Monoclonal, Mouse,IgG
<b>Purification</b>	The antibody was affinity-purified from mouse antiserum by affinity-chromatography using epitope-specific immunogen.
<b>Dilution</b>	WB 1:500-2000
<b>Concentration</b>	1 mg/ml
<b>Purity</b>	≥90%
<b>Storage Stability</b>	-20°C/1 year
<b>Synonyms</b>	NPDC1; Neural proliferation differentiation and control protein 1; NPDC-1
<b>Observed Band</b>	35kD
<b>Cell Pathway</b>	Membrane ; Single-pass membrane protein .
<b>Tissue Specificity</b>	Strongly expressed in adult brain; especially in hippocampus, frontal lobe and temporal lobe.
<b>Function</b>	function:Suppresses oncogenic transformation in neural and non-neural cells and down-regulates neural cell proliferation. Might be involved in transcriptional regulation.,similarity:Belongs to the NPDC1/cab-1 family.,tissue specificity:Strongly expressed in adult brain; especially in hippocampus, frontal lobe and temporal lobe.,
<b>Background</b>	function:Suppresses oncogenic transformation in neural and non-neural cells and down-regulates neural cell proliferation. Might be involved in transcriptional regulation.,similarity:Belongs to the NPDC1/cab-1 family.,tissue specificity:Strongly expressed in adult brain; especially in hippocampus, frontal lobe and temporal lobe.,

**Nanjing BYabscience technology Co.,Ltd**



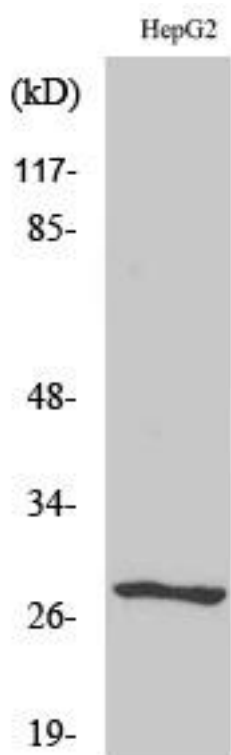
**matters needing attention**

Avoid repeated freezing and thawing!

**Usage suggestions**

This product can be used in immunological reaction related experiments. For more information, please consult technical personnel.

## Products Images



Western Blot analysis of various cells using NPDC-1 Monoclonal Antibody