



# Neuromedin-S Monoclonal Antibody

<b>Catalog No</b>	BYmab-12760
<b>Isotype</b>	IgG
<b>Reactivity</b>	Human;Rat;Mouse;
<b>Applications</b>	WB
<b>Gene Name</b>	NMS
<b>Protein Name</b>	Neuromedin-S
<b>Immunogen</b>	The antiserum was produced against synthesized peptide derived from human NMS. AA range:104-153
<b>Specificity</b>	Neuromedin-S Monoclonal Antibody detects endogenous levels of Neuromedin-S protein.
<b>Formulation</b>	Liquid in PBS containing 50% glycerol, 0.5% BSA and 0.02% sodium azide.
<b>Source</b>	Monoclonal, Mouse,IgG
<b>Purification</b>	The antibody was affinity-purified from mouse antiserum by affinity-chromatography using epitope-specific immunogen.
<b>Dilution</b>	WB 1:500-2000
<b>Concentration</b>	1 mg/ml
<b>Purity</b>	≥90%
<b>Storage Stability</b>	-20°C/1 year
<b>Synonyms</b>	NMS; Neuromedin-S
<b>Observed Band</b>	24kD
<b>Cell Pathway</b>	Secreted .
<b>Tissue Specificity</b>	Brain,
<b>Function</b>	function:Implicated in the regulation of circadian rhythms through autocrine and/or paracrine actions.,similarity:Belongs to the NmU family.,
<b>Background</b>	This gene encodes a member of the neuromedin family of neuropeptides. The encoded preproprotein is proteolytically processed to generate a biologically active neuropeptide that plays a role in the regulation of circadian rhythm, anorexigenic action, antidiuretic action, cardiovascular function and stimulation of oxytocin and vasopressin release. [provided by RefSeq, May 2016],
<b>matters needing attention</b>	Avoid repeated freezing and thawing!

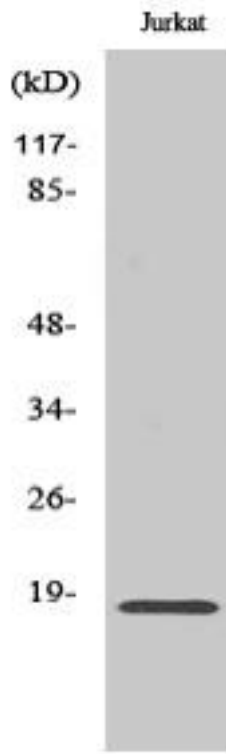
**Nanjing BYabscience technology Co.,Ltd**



### Usage suggestions

This product can be used in immunological reaction related experiments. For more information, please consult technical personnel.

## Products Images



Western Blot analysis of various cells using  
Neuromedin-S Monoclonal Antibody

Nanjing BYabs science technology Co.,Ltd

网址: [www.njbybio.com](http://www.njbybio.com)

官方热线: 025-5229-8998

监督电话: 15950492658