



# Neurexophilin-1 Monoclonal Antibody

Catalog No	BYmab-12752
Isotype	IgG
Reactivity	Human;Mouse;Rat
Applications	WB
Gene Name	NXPH1
Protein Name	Neurexophilin-1
Immunogen	The antiserum was produced against synthesized peptide derived from human NXPH1. AA range:77-126
Specificity	Neurexophilin-1 Monoclonal Antibody detects endogenous levels of Neurexophilin-1 protein.
Formulation	Liquid in PBS containing 50% glycerol, 0.5% BSA and 0.02% sodium azide.
Source	Monoclonal, Mouse,IgG
Purification	The antibody was affinity-purified from mouse antiserum by affinity-chromatography using epitope-specific immunogen.
Dilution	WB 1:500-2000
Concentration	1 mg/ml
Purity	≥90%
Storage Stability	-20°C/1 year
Synonyms	NXPH1; NPH1; Nbla00697; Neurexophilin-1
Observed Band	31kD
Cell Pathway	Secreted .
Tissue Specificity	Brain,Neuroblastoma,
Function	function:May be signaling molecules that resemble neuropeptides and that act by binding to alpha-neurexins and possibly other receptors .,similarity:Belongs to the neurexophilin family.,
Background	This gene is a member of the neurexophilin family and encodes a secreted protein with a variable N-terminal domain, a highly conserved, N-glycosylated central domain, a short linker region, and a cysteine-rich C-terminal domain. This protein forms a very tight complex with alpha neurexins, a group of proteins that promote adhesion between dendrites and axons. [provided by RefSeq, Jul 2008],

Nanjing BYabscience technology Co.,Ltd

网址: [www.njbybio.com](http://www.njbybio.com)

官方热线: 025-5229-8998

监督电话: 15950492658



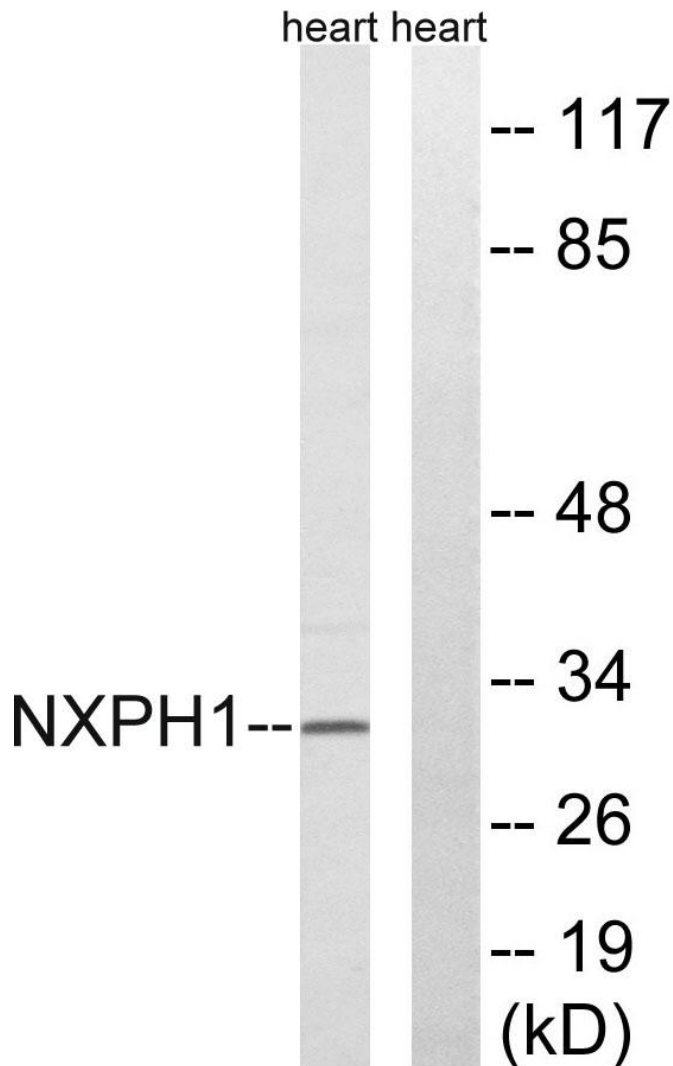
**matters needing attention**

Avoid repeated freezing and thawing!

**Usage suggestions**

This product can be used in immunological reaction related experiments. For more information, please consult technical personnel.

**Products Images**



Western Blot analysis of various cells using  
Neurexophilin-1 Monoclonal Antibody

Nanjing BYabs science technology Co.,Ltd

网址: [www.njbybio.com](http://www.njbybio.com)

官方热线: 025-5229-8998

监督电话: 15950492658