



# MCH-2R Monoclonal Antibody

|                           |   |
|---------------------------|---|
| <b>Catalog No</b>         | BYmab-12745   |
| <b>Isotype</b>            | IgG   |
| <b>Reactivity</b>         | Human;Rat;Mouse;  |
| <b>Applications</b>       | WB  |
| <b>Gene Name</b>          | MCHR2   |
| <b>Protein Name</b>       | Melanin-concentrating hormone receptor 2  |
| <b>Immunogen</b>          | The antiserum was produced against synthesized peptide derived from human MCHR2. AA range:291-340   |
| <b>Specificity</b>        | MCH-2R Monoclonal Antibody detects endogenous levels of MCH-2R protein.   |
| <b>Formulation</b>        | Liquid in PBS containing 50% glycerol, 0.5% BSA and 0.02% sodium azide.   |
| <b>Source</b>             | Monoclonal, Mouse,IgG   |
| <b>Purification</b>       | The antibody was affinity-purified from mouse antiserum by affinity-chromatography using epitope-specific immunogen.  |
| <b>Dilution</b>           | WB 1:500-2000   |
| <b>Concentration</b>      | 1 mg/ml   |
| <b>Purity</b>             | ≥90%  |
| <b>Storage Stability</b>  | -20°C/1 year  |
| <b>Synonyms</b>           | MCHR2; GPR145; SLT; Melanin-concentrating hormone receptor 2; MCH receptor 2; MCH-R2; MCHR-2; G-protein coupled receptor 145; GPRv17; MCH-2R; MCH2; MCH2R   |
| <b>Observed Band</b>      | 39kD  |
| <b>Cell Pathway</b>       | Cell membrane; Multi-pass membrane protein.   |
| <b>Tissue Specificity</b> | Specifically expressed in the brain, with highest levels in cerebral cortex, hippocampus and amygdala. No expression detected in the cerebellum, thalamus or hypothalamus.  |
| <b>Function</b>           | function:Receptor for melanin-concentrating hormone, coupled to G proteins that activate phosphoinositide hydrolysis.,similarity:Belongs to the G-protein coupled receptor 1 family.,tissue specificity:Specifically expressed in the brain, with highest levels in cerebral cortex, hippocampus and amygdala. No expression detected in the cerebellum, thalamus or hypothalamus., |
| <b>Background</b>         | function:Receptor for melanin-concentrating hormone, coupled to G proteins that activate phosphoinositide hydrolysis.,similarity:Belongs to the G-protein coupled   |

**Nanjing BYabscience technology Co.,Ltd**



receptor 1 family.,tissue specificity:Specifically expressed in the brain, with highest levels in cerebral cortex, hippocampus and amygdala. No expression detected in the cerebellum, thalamus or hypothalamus.,

**matters needing attention**

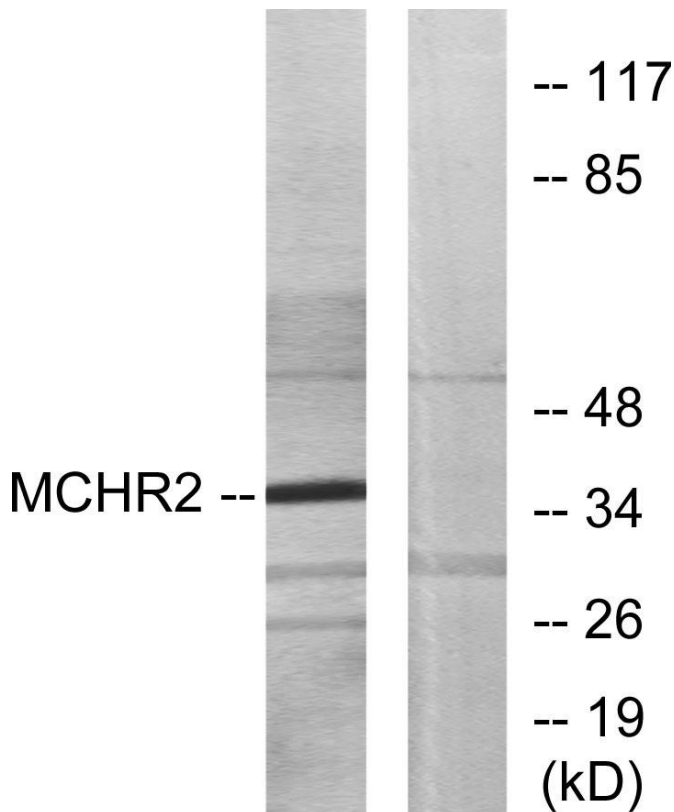
Avoid repeated freezing and thawing!

**Usage suggestions**

This product can be used in immunological reaction related experiments. For more information, please consult technical personnel.

**Products Images**

Western Blot analysis of various cells using MCH-2R Monoclonal Antibody



Nanjing BYabs science technology Co.,Ltd

网址: [www.njbybio.com](http://www.njbybio.com)

官方热线: 025-5229-8998

监督电话: 15950492658