



# GRIN1 Monoclonal Antibody

<b>Catalog No</b>	BYmab-12733
<b>Isotype</b>	IgG
<b>Reactivity</b>	Human;Rat;Mouse;
<b>Applications</b>	WB
<b>Gene Name</b>	GPRIN1
<b>Protein Name</b>	G protein-regulated inducer of neurite outgrowth 1
<b>Immunogen</b>	The antiserum was produced against synthesized peptide derived from human GPRIN1. AA range:231-280
<b>Specificity</b>	GRIN1 Monoclonal Antibody detects endogenous levels of GRIN1 protein.
<b>Formulation</b>	Liquid in PBS containing 50% glycerol, 0.5% BSA and 0.02% sodium azide.
<b>Source</b>	Monoclonal, Mouse,IgG
<b>Purification</b>	The antibody was affinity-purified from mouse antiserum by affinity-chromatography using epitope-specific immunogen.
<b>Dilution</b>	WB 1:500-2000
<b>Concentration</b>	1 mg/ml
<b>Purity</b>	≥90%
<b>Storage Stability</b>	-20°C/1 year
<b>Synonyms</b>	GPRIN1; KIAA1893; G protein-regulated inducer of neurite outgrowth 1; GRIN1
<b>Observed Band</b>	102kD
<b>Cell Pathway</b>	Cell membrane ; Lipid-anchor . Cell projection, growth cone . Highly enriched in growth cone. .
<b>Tissue Specificity</b>	Widely expressed in the central nervous system, with highest levels in spinal cord.
<b>Function</b>	function:May be involved in neurite outgrowth.,PTM:Palmitoylation on Cys-999 and/or Cys-1000 is required for membrane targeting.,subcellular location:Highly enriched in growth cone.,subunit:Interacts with activated forms of GNAI1, GNAO1 and GNAZ.,tissue specificity:Widely expressed in the central nervous system, with highest levels in spinal cord.,
<b>Background</b>	function:May be involved in neurite outgrowth.,PTM:Palmitoylation on Cys-999 and/or Cys-1000 is required for membrane targeting.,subcellular location:Highly enriched in growth cone.,subunit:Interacts with activated forms of GNAI1, GNAO1 and GNAZ.,tissue specificity:Widely expressed in the central nervous system, with highest levels in spinal cord.,

**Nanjing BYabscience technology Co.,Ltd**



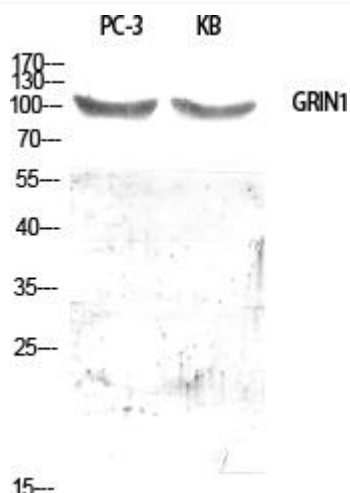
**matters needing attention**

Avoid repeated freezing and thawing!

**Usage suggestions**

This product can be used in immunological reaction related experiments. For more information, please consult technical personnel.

## Products Images



Western Blot analysis of various cells using GRIN1 Monoclonal Antibody