



# DBH Monoclonal Antibody

<b>Catalog No</b>	BYmab-12711
<b>Isotype</b>	IgG
<b>Reactivity</b>	Human;Rat;Mouse;
<b>Applications</b>	WB
<b>Gene Name</b>	DBH
<b>Protein Name</b>	Dopamine beta-hydroxylase
<b>Immunogen</b>	The antiserum was produced against synthesized peptide derived from human DBH. AA range:401-450
<b>Specificity</b>	DBH Monoclonal Antibody detects endogenous levels of DBH protein.
<b>Formulation</b>	Liquid in PBS containing 50% glycerol, 0.5% BSA and 0.02% sodium azide.
<b>Source</b>	Monoclonal, Mouse,IgG
<b>Purification</b>	The antibody was affinity-purified from mouse antiserum by affinity-chromatography using epitope-specific immunogen.
<b>Dilution</b>	WB 1:500-2000
<b>Concentration</b>	1 mg/ml
<b>Purity</b>	≥90%
<b>Storage Stability</b>	-20°C/1 year
<b>Synonyms</b>	DBH; Dopamine beta-hydroxylase; Dopamine beta-monooxygenase
<b>Observed Band</b>	69kD
<b>Cell Pathway</b>	[Soluble dopamine beta-hydroxylase]: Cytoplasmic vesicle, secretory vesicle lumen . Cytoplasmic vesicle, secretory vesicle, chromaffin granule lumen . Secreted .; Cytoplasmic vesicle, secretory vesicle membrane ; Single-pass type II membrane protein . Cytoplasmic vesicle, secretory vesicle, chromaffin granule membrane ; Single-pass type II membrane protein .
<b>Tissue Specificity</b>	Brain,Plasma,
<b>Function</b>	catalytic activity:3,4-dihydroxyphenethylamine + ascorbate + O(2) = noradrenaline + dehydroascorbate + H(2)O.,cofactor:Binds 1 PQQ per subunit.,cofactor:Binds 2 copper ions per subunit.,disease:Defects in DBH are the cause of DBH deficiency [MIM:223360]; also called norepinephrine deficiency or noradrenaline deficiency. This disorder is characterized by profound deficits in autonomic and cardiovascular function, but apparently only subtle signs, if any, of central nervous system dysfunction.,function:Conversion of dopamine to noradrenaline.,induction:Activity is enhanced by nerve growth factor (in superior

**Nanjing BYabscience technology Co.,Ltd**



cervical ganglia and adrenal medulla). Trans-synaptic stimulation with reserpine, acetylcholine and glucocorticoids.,online information:Dopamine beta hydroxylase entry,pathway:Catecholamine biosynthesis; norepinephrine biosynthesis; norepinephrine from dopamine: step 1/1.,polymorphism:

## Background

The protein encoded by this gene is an oxidoreductase belonging to the copper type II, ascorbate-dependent monooxygenase family. It is present in the synaptic vesicles of postganglionic sympathetic neurons and converts dopamine to norepinephrine. It exists in both soluble and membrane-bound forms, depending on the absence or presence, respectively, of a signal peptide. [provided by RefSeq, Jul 2008],

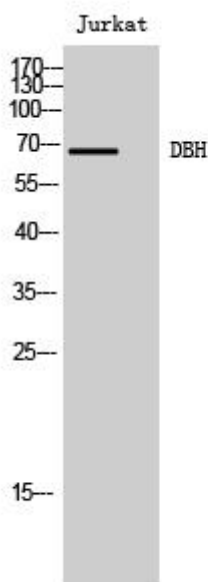
## matters needing attention

Avoid repeated freezing and thawing!

## Usage suggestions

This product can be used in immunological reaction related experiments. For more information, please consult technical personnel.

## Products Images



Western Blot analysis of various cells using DBH Monoclonal Antibody