



CRMP-3 Monoclonal Antibody

Catalog No	BYmab-12705
Isotype	IgG
Reactivity	Human;Mouse;Rat
Applications	WB
Gene Name	DPYSL4
Protein Name	Dihydropyrimidinase-related protein 4
Immunogen	The antiserum was produced against synthesized peptide derived from human DPYSL4. AA range:91-140
Specificity	CRMP-3 Monoclonal Antibody detects endogenous levels of CRMP-3 protein.
Formulation	Liquid in PBS containing 50% glycerol, 0.5% BSA and 0.02% sodium azide.
Source	Monoclonal, Mouse,IgG
Purification	The antibody was affinity-purified from mouse antiserum by affinity-chromatography using epitope-specific immunogen.
Dilution	WB 1:500-2000
Concentration	1 mg/ml
Purity	≥90%
Storage Stability	-20°C/1 year
Synonyms	DPYSL4; CRMP3; ULIP4; Dihydropyrimidinase-related protein 4; DRP-4; Collapsin response mediator protein 3; CRMP-3; UNC33-like phosphoprotein 4; ULIP-4
Observed Band	62kD
Cell Pathway	Cytoplasm .
Tissue Specificity	Brain,Fetal brain,Retina,
Function	disease:Antibodies against post-translationally modified DPYSL4, also called anti-CV2 autoantibodies, are present in sera from patients with paraneoplastic neurological diseases (PND). PND are disorders of the nervous system associated with various systemic cancers which are not a direct result of the tumor mass or metastasis, but attributed to remote effects of the cancer.,function:Necessary for signaling by class 3 semaphorins and subsequent remodeling of the cytoskeleton. Plays a role in axon guidance, neuronal growth cone collapse and cell migration.,PTM:Phosphorylated upon DNA damage, probably by ATM or ATR.,similarity:Belongs to the DHOase family.

Nanjing BYabscience technology Co.,Ltd



Hydantoinase/dihydropyrimidinase subfamily.,subunit:Homotetramer, and heterotetramer with CRMP1, DPYSL2, DPYSL3 or DPYSL5. Interacts with PLEXA1.,

Background

disease:Antibodies against post-translationally modified DPYSL4, also called anti-CV2 autoantibodies, are present in sera from patients with paraneoplastic neurological diseases (PND). PND are disorders of the nervous system associated with various systemic cancers which are not a direct result of the tumor mass or metastasis, but attributed to remote effects of the cancer.,function:Necessary for signaling by class 3 semaphorins and subsequent remodeling of the cytoskeleton. Plays a role in axon guidance, neuronal growth cone collapse and cell migration.,PTM:Phosphorylated upon DNA damage, probably by ATM or ATR.,similarity:Belongs to the DHOase family. Hydantoinase/dihydropyrimidinase subfamily.,subunit:Homotetramer, and heterotetramer with CRMP1, DPYSL2, DPYSL3 or DPYSL5. Interacts with PLEXA1.,

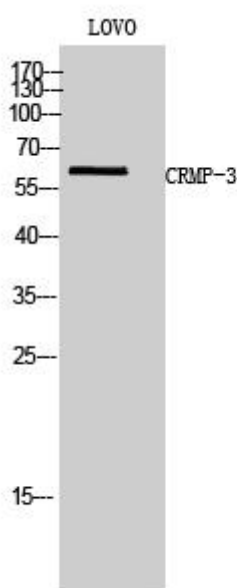
matters needing attention

Avoid repeated freezing and thawing!

Usage suggestions

This product can be used in immunological reaction related experiments. For more information, please consult technical personnel.

Products Images



Western Blot analysis of various cells using CRMP-3 Monoclonal Antibody

Nanjing BYabs science technology Co.,Ltd