



# Cerebellin 2 Monoclonal Antibody

Catalog No	BYmab-12699
Isotype	IgG
Reactivity	Human;Mouse;Rat;Monkey
Applications	WB
Gene Name	CBLN2
Protein Name	Cerebellin-2
Immunogen	The antiserum was produced against synthesized peptide derived from human CBLN2. AA range:161-210
Specificity	Cerebellin 2 Monoclonal Antibody detects endogenous levels of Cerebellin 2 protein.
Formulation	Liquid in PBS containing 50% glycerol, 0.5% BSA and 0.02% sodium azide.
Source	Monoclonal, Mouse,IgG
Purification	The antibody was affinity-purified from mouse antiserum by affinity-chromatography using epitope-specific immunogen.
Dilution	WB 1:500-2000
Concentration	1 mg/ml
Purity	≥90%
Storage Stability	-20°C/1 year
Synonyms	CBLN2; Cerebellin-2
Observed Band	24kD
Cell Pathway	Secreted .
Tissue Specificity	Brain,
Function	similarity:Contains 1 C1q domain.,subunit:May interact with CBLN1, CBLN3 and CBLN4.,
Background	similarity:Contains 1 C1q domain.,subunit:May interact with CBLN1, CBLN3 and CBLN4.,
matters needing attention	Avoid repeated freezing and thawing!

Nanjing BYabscience technology Co.,Ltd

网址: [www.njbybio.com](http://www.njbybio.com)

官方热线: 025-5229-8998

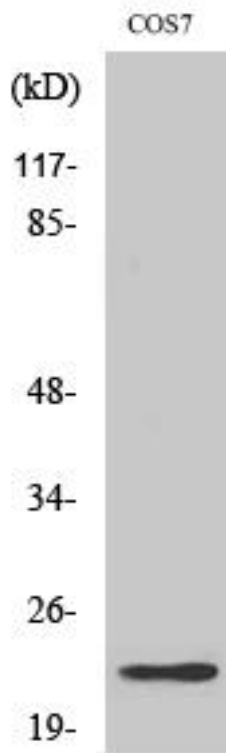
监督电话: 15950492658



### Usage suggestions

This product can be used in immunological reaction related experiments. For more information, please consult technical personnel.

## Products Images



Western Blot analysis of various cells using Cerebellin 2 Monoclonal Antibody