



CARD 6 Monoclonal Antibody

Catalog No	BYmab-12696
Isotype	IgG
Reactivity	Human;
Applications	WB
Gene Name	CARD6
Protein Name	Caspase recruitment domain-containing protein 6
Immunogen	The antiserum was produced against synthesized peptide derived from human CARD6. AA range:1-50
Specificity	CARD 6 Monoclonal Antibody detects endogenous levels of CARD 6 protein.
Formulation	Liquid in PBS containing 50% glycerol, 0.5% BSA and 0.02% sodium azide.
Source	Monoclonal, Mouse,IgG
Purification	The antibody was affinity-purified from mouse antiserum by affinity-chromatography using epitope-specific immunogen.
Dilution	WB 1:500-2000
Concentration	1 mg/ml
Purity	≥90%
Storage Stability	-20°C/1 year
Synonyms	CARD6; Caspase recruitment domain-containing protein 6
Observed Band	116kD
Cell Pathway	
Tissue Specificity	Aorta endothelial cell,Colon,Epithelium,Skeletal muscle,
Function	function:May be involved in apoptosis.,similarity:Contains 1 CARD domain.,
Background	This gene encodes a protein that contains a caspase recruitment domain (CARD), an antiparallel six-helical bundle that mediates homotypic protein-protein interactions. The encoded protein is a microtubule-associated protein that has been shown to interact with receptor-interacting protein kinases and positively modulate signal transduction pathways converging on activation of the inducible transcription factor NF-kB. [provided by RefSeq, Jul 2008],

Nanjing BYabscience technology Co.,Ltd

网址: www.njbybio.com

官方热线: 025-5229-8998

监督电话: 15950492658



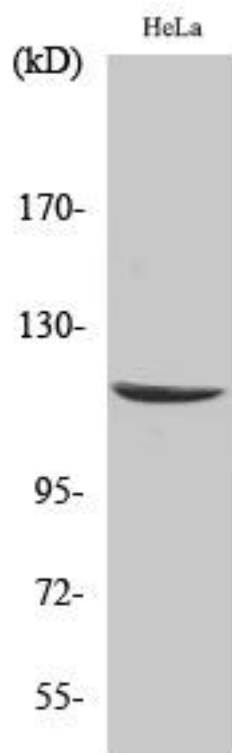
matters needing attention

Avoid repeated freezing and thawing!

Usage suggestions

This product can be used in immunological reaction related experiments. For more information, please consult technical personnel.

Products Images



Western Blot analysis of various cells using CARD 6 Monoclonal Antibody