



CARD 11 Monoclonal Antibody

Catalog No	BYmab-12694
Isotype	IgG
Reactivity	Human;Mouse
Applications	WB
Gene Name	CARD11
Protein Name	Caspase recruitment domain-containing protein 11
Immunogen	The antiserum was produced against synthesized peptide derived from human CARD11. AA range:10-59
Specificity	CARD 11 Monoclonal Antibody detects endogenous levels of CARD 11 protein.
Formulation	Liquid in PBS containing 50% glycerol, 0.5% BSA and 0.02% sodium azide.
Source	Monoclonal, Mouse,IgG
Purification	The antibody was affinity-purified from mouse antiserum by affinity-chromatography using epitope-specific immunogen.
Dilution	WB 1:500-2000
Concentration	1 mg/ml
Purity	≥90%
Storage Stability	-20°C/1 year
Synonyms	CARD11; CARMA1; Caspase recruitment domain-containing protein 11; CARD-containing MAGUK protein 1; Carma 1
Observed Band	130kD
Cell Pathway	Cytoplasm . Membrane raft . Colocalized with DPP4 in membrane rafts. .
Tissue Specificity	Detected in adult peripheral blood leukocytes, thymus, spleen and liver. Also found in promyelocytic leukemia HL-60 cells, chronic myelogenous leukemia K-562 cells, Burkitt's lymphoma Raji cells and colorectal adenocarcinoma SW480 cells. Not detected in HeLaS3, MOLT-4, A-549 and G431 cells.
Function	caution:Supposed to contain a SH3 domain which is not detected by PROSITE, Pfam or SMART.,function:Activates NF-kappa-B via BCL10 and IKK. Stimulates the phosphorylation of BCL10.,similarity:Contains 1 CARD domain.,similarity:Contains 1 guanylate kinase-like domain.,similarity:Contains 1 PDZ (DHR) domain.,subunit:CARD11 and BCL10 bind to each other by CARD-CARD interaction.,tissue specificity:Detected in adult peripheral blood leukocytes, thymus, spleen and liver. Also found in promyelocytic leukemia HL-60 cells, chronic myelogenous leukemia K562 cells, Burkitt's lymphoma Raji cells

Nanjing BYabscience technology Co.,Ltd



and colorectal adenocarcinoma SW480 cells. Not detected in HeLa S3, Molt-4, A549 and G431 cells.,

Background

The protein encoded by this gene belongs to the membrane-associated guanylate kinase (MAGUK) family, a class of proteins that functions as molecular scaffolds for the assembly of multiprotein complexes at specialized regions of the plasma membrane. This protein is also a member of the CARD protein family, which is defined by carrying a characteristic caspase-associated recruitment domain (CARD). This protein has a domain structure similar to that of CARD14 protein. The CARD domains of both proteins have been shown to specifically interact with BCL10, a protein known to function as a positive regulator of cell apoptosis and NF-kapMAB activation. When expressed in cells, this protein activated NF-kapMAB and induced the phosphorylation of BCL10. [provided by RefSeq, Jul 2008],

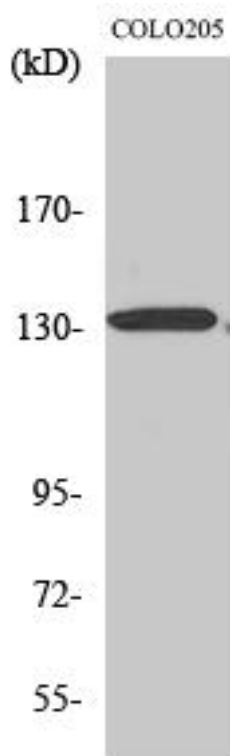
matters needing attention

Avoid repeated freezing and thawing!

Usage suggestions

This product can be used in immunological reaction related experiments. For more information, please consult technical personnel.

Products Images



Western Blot analysis of various cells using CARD 11 Monoclonal Antibody