



# CARD 10 Monoclonal Antibody

<b>Catalog No</b>	BYmab-12693
<b>Isotype</b>	IgG
<b>Reactivity</b>	Human;Mouse
<b>Applications</b>	WB
<b>Gene Name</b>	CARD10
<b>Protein Name</b>	Caspase recruitment domain-containing protein 10
<b>Immunogen</b>	The antiserum was produced against synthesized peptide derived from human CARD10. AA range:481-530
<b>Specificity</b>	CARD 10 Monoclonal Antibody detects endogenous levels of CARD 10 protein.
<b>Formulation</b>	Liquid in PBS containing 50% glycerol, 0.5% BSA and 0.02% sodium azide.
<b>Source</b>	Monoclonal, Mouse,IgG
<b>Purification</b>	The antibody was affinity-purified from mouse antiserum by affinity-chromatography using epitope-specific immunogen.
<b>Dilution</b>	WB 1:500-2000
<b>Concentration</b>	1 mg/ml
<b>Purity</b>	≥90%
<b>Storage Stability</b>	-20°C/1 year
<b>Synonyms</b>	CARD10; CARMA3; Caspase recruitment domain-containing protein 10; CARD-containing MAGUK protein 3; Carma 3
<b>Observed Band</b>	120kD
<b>Cell Pathway</b>	Cytoplasm .
<b>Tissue Specificity</b>	Detected in adult heart, kidney and liver; lower levels in intestine, placenta, muscle and lung. Also found in fetal lung, liver and kidney.
<b>Function</b>	caution:Supposed to contain a SH3, a PDZ and a guanylate kinase-like domain. But none of these 3 domains are detected by PROSITE, Pfam or SMART.,function:Activates NF-kappa-B via BCL10 and IKK.,similarity:Contains 1 CARD domain.,subunit:CARD10 and BCL10 bind to each other by CARD-CARD interaction. They both participate in a complex with MALT1, where MALT1 binds to BCL10.,tissue specificity:Detected in adult heart, kidney and liver; lower levels in intestine, placenta, muscle and lung. Also found in fetal lung, liver and kidney.,
<b>Background</b>	The caspase recruitment domain (CARD) is a protein module that consists of 6 or 7 antiparallel alpha helices. It participates in apoptosis signaling through highly

**Nanjing BYabscience technology Co.,Ltd**



specific protein-protein homophilic interactions. Like several other CARD proteins, CARD10 belongs to the membrane-associated guanylate kinase (MAGUK) family and activates NF-kappa-B (NFKB; see MIM 164011) through BCL10 (MIM 603517) (Wang et al., 2001 [PubMed 11259443]).[supplied by OMIM, Mar 2008],

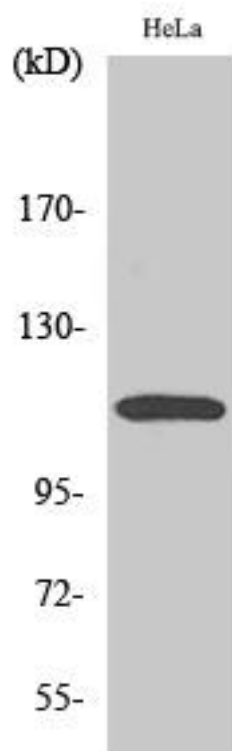
**matters needing attention**

Avoid repeated freezing and thawing!

**Usage suggestions**

This product can be used in immunological reaction related experiments. For more information, please consult technical personnel.

## Products Images



Western Blot analysis of various cells using CARD 10 Monoclonal Antibody