



APBA2BP Monoclonal Antibody

| | |
|---------------------------|---|
| Catalog No | BYmab-12685 |
| Isotype | IgG |
| Reactivity | Human;Mouse |
| Applications | WB |
| Gene Name | NECAB3 |
| Protein Name | N-terminal EF-hand calcium-binding protein 3 |
| Immunogen | The antiserum was produced against synthesized peptide derived from human NECAB3. AA range:321-370 |
| Specificity | APBA2BP Monoclonal Antibody detects endogenous levels of APBA2BP protein. |
| Formulation | Liquid in PBS containing 50% glycerol, 0.5% BSA and 0.02% sodium azide. |
| Source | Monoclonal, Mouse,IgG |
| Purification | The antibody was affinity-purified from mouse antiserum by affinity-chromatography using epitope-specific immunogen. |
| Dilution | WB 1:500-2000 |
| Concentration | 1 mg/ml |
| Purity | ≥90% |
| Storage Stability | -20°C/1 year |
| Synonyms | NECAB3; APBA2BP; NIP1; SYTIP2; XB51; N-terminal EF-hand calcium-binding protein 3; Amyloid beta A4 protein-binding family A member 2-binding protein; Nek2-interacting protein 1; Neuronal calcium-binding protein 3; X11L-binding protein 51 |
| Observed Band | 44kD |
| Cell Pathway | Golgi apparatus . |
| Tissue Specificity | Strongly expressed in heart and skeletal muscle, moderately in brain and pancreas. |
| Function | alternative products:Additional isoforms seem to exist. Experimental confirmation may be lacking for some isoforms,function:Inhibits the interaction of APBA2 with beta-amyloid precursor protein (APP), and hence allows formation of beta-amyloid.,PTM:Phosphorylated by NEK2.,similarity:Contains 1 ABM domain.,similarity:Contains 1 EF-hand domain.,subunit:Interacts with the N-terminal domain of APBA2. Interacts with NEK2.,tissue specificity:Strongly expressed in heart and skeletal muscle, moderately in brain and pancreas., |

Nanjing BYabscience technology Co.,Ltd



Background

The protein encoded by this gene interacts with the amino-terminal domain of the neuron-specific X11-like protein (X11L), inhibits the association of X11L with amyloid precursor protein through a non-competitive mechanism, and abolishes the suppression of beta-amyloid production by X11L. This protein, together with X11L, may play an important role in the regulatory system of amyloid precursor protein metabolism and beta-amyloid generation. The protein is phosphorylated by NIMA-related expressed kinase 2, and localizes to the Golgi apparatus. Multiple transcript variants encoding different isoforms have been found for this gene. [provided by RefSeq, Jul 2008],

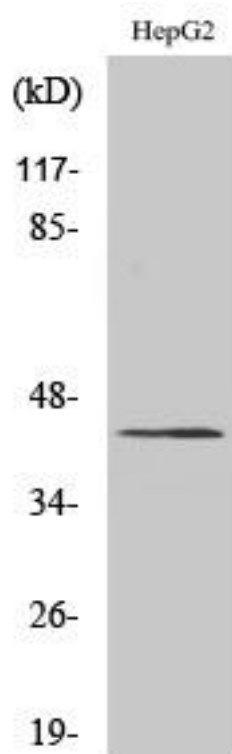
matters needing attention

Avoid repeated freezing and thawing!

Usage suggestions

This product can be used in immunological reaction related experiments. For more information, please consult technical personnel.

Products Images



Western Blot analysis of various cells using APBA2BP Monoclonal Antibody